

APP CRS 271°	Rwy Idg 5010
	TDZE 777
	Apt Elev 778

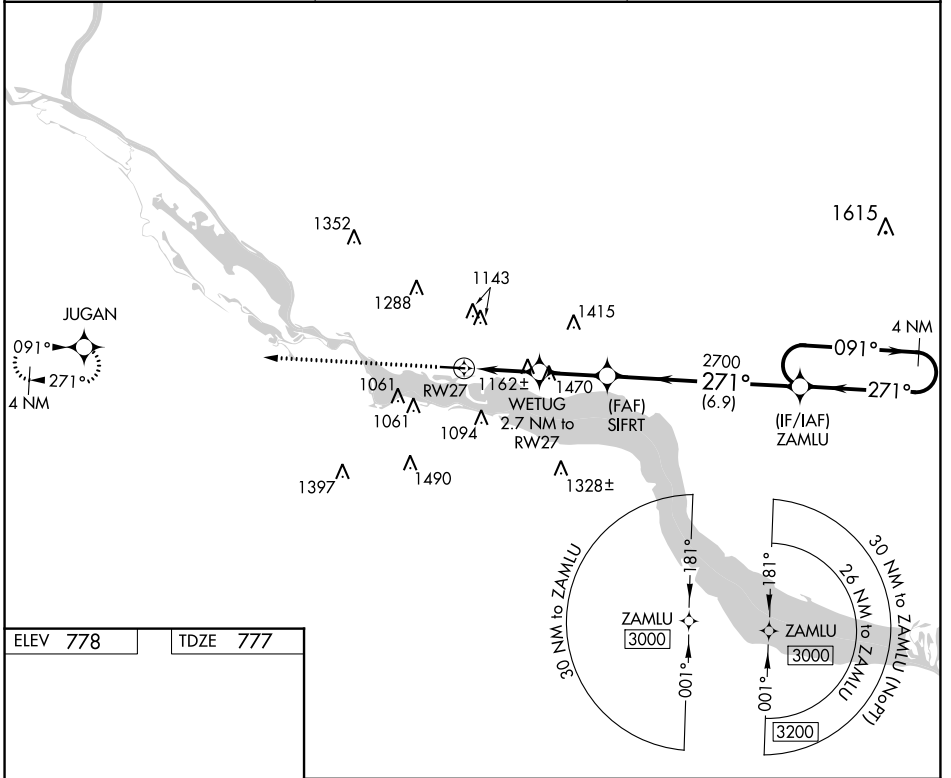
RNAV (GPS) RWY 27

RED WING RGNL (RGK)

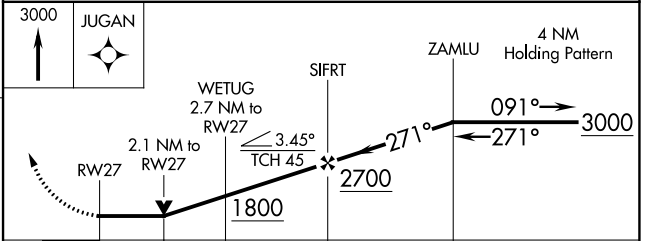
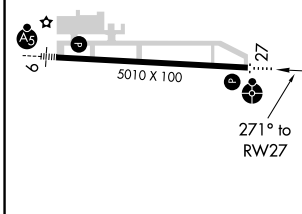
⚠ DME/DME RNP-0.3 NA. VDP NA with South St. Paul altimeter setting. When local altimeter setting not received, use South St. Paul altimeter setting; increase all MDA 80 feet and LNAV Cat C visibility ½ mile, Circling Cat A and C visibility ¼ mile. Helicopter visibility reduction below ¼ SM NA. Inop table does not apply to LNAV Cat C.

ODALS
 MISSED APPROACH: Climb to 3000 direct JUGAN and hold.

AWOS-3 119.25	MINNEAPOLIS APP CON 121.2 335.65	UNICOM 123.05 (CTAF) 0
-------------------------	--	----------------------------------



ELEV 778	TDZE 777
----------	----------



CATEGORY	A	B	C	D
LNAV MDA	1520-¾ 743 (800-¾)	1520-1¼ 743 (800-1¼)	1520-2 743 (800-2)	NA
CIRCLING	1520-1 742 (800-1)	1520-1¼ 742 (800-1¼)	1540-2¼ 762 (800-2¼)	NA

NC-1, 16 JUL 2020 to 13 AUG 2020

NC-1, 16 JUL 2020 to 13 AUG 2020