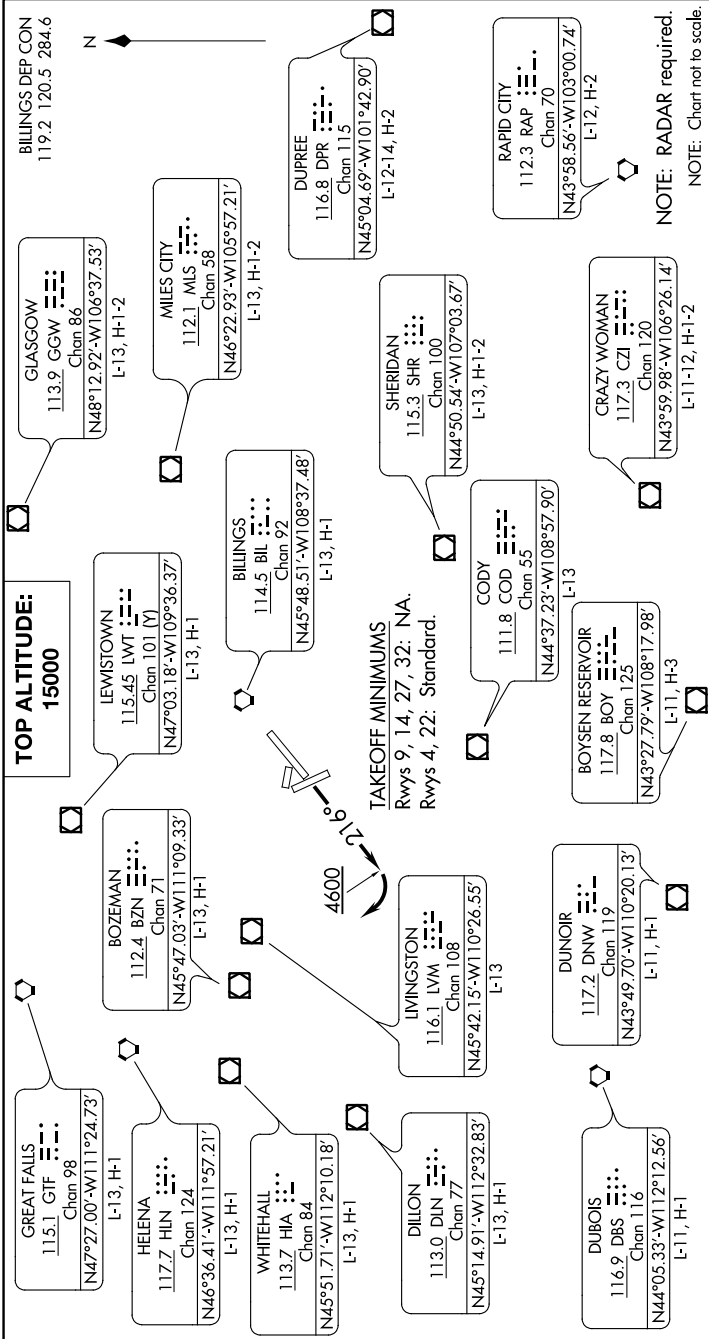


# BILLINGS FIVE DEPARTURE

AL-6781 (FAA)

LAUREL MUNI (6S8)  
LAUREL, MONTANA

0200 GUN 31 0200 2020 16 JUL 2020 '1-MN



**DEPARTURE ROUTE DESCRIPTION**

**TAKEOFF RUNWAY 4:** Climb on assigned heading for vectors to assigned fix/route, thence. . . .

**TAKEOFF RUNWAY 22:** Climb heading 216° to 4600 before turning right, then on assigned heading for vectors to assigned fix/route, thence. . . .

. . . . maintain 15000 or assigned lower altitude. Expect clearance to filed altitude/flight level five minutes after departure.

**LOST COMMUNICATIONS:** If no transmissions are received for 1 minute after departure, fly last assigned heading until reaching 7000. Proceed direct **BIL VORTAC**, then on last routing cleared and climb to filed altitude.

# BILLINGS FIVE DEPARTURE

LAUREL, MONTANA  
LAUREL MUNI (6S8)

NW-1, 16 JUL 2020 to 13 AUG 2020