

VORTAC BIL <b>114.5</b> Chan 92	APP CRS <b>208°</b>	Rwy Idg TDZE Apt Elev	<b>5199</b> <b>3472</b> <b>3543</b>
---------------------------------------	------------------------	-----------------------------	---

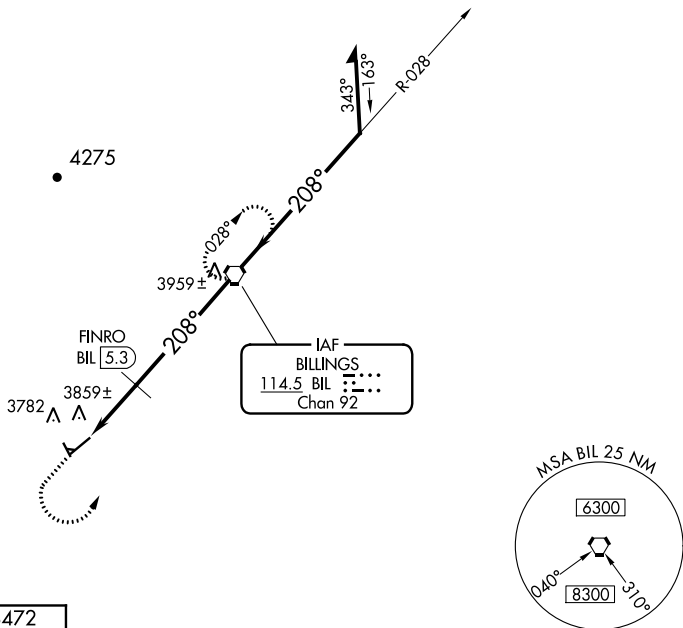
# VOR RWY 22

LAUREL MUNI (6S8)

**⚠** When local altimeter setting not received, use Billings altimeter setting.  
**⚠** Rwy 22 helicopter visibility reduction below ¼ SM NA. Circling NA to Rwy 9 and 27. Circling Rwy 14, 32 NA at night.  
**❄** -30°C

MISSED APPROACH: Climb to 4700 then climbing left turn to 6300 direct BIL VORTAC and hold.

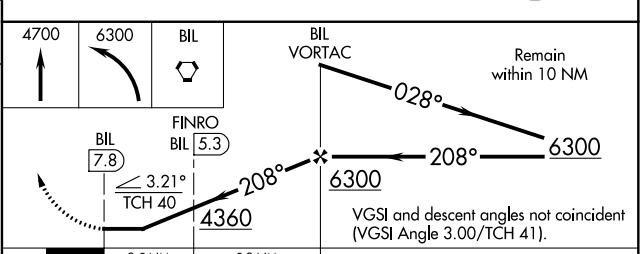
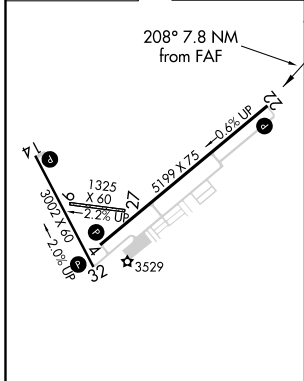
AWOS-2 <b>135.05</b>	BILLINGS APP CON <b>119.2 120.5 284.6</b>	AUNICOM <b>123.05 (CTAF)</b> <b>📶</b>
-------------------------	--	--



NW-1, 16 JUL 2020 to 13 AUG 2020

NW-1, 16 JUL 2020 to 13 AUG 2020

ELEV 3543	TDZE 3472
-----------	-----------



CATEGORY	A	B	C	D
S-22	4360-1¼ 888 (900-1¼)		4360-2¾ 888 (900-2¾)	4360-3 888 (900-3)
CIRCLING	4360-1¼ 817 (900-1¼)		4360-2¾ 817 (900-2¾)	4360-3 817 (900-3)
FINRO FIX MINIMUMS				
S-22	4160-1 688 (700-1)		4160-2 688 (700-2)	4160-2¼ 688 (700-2¼)
CIRCLING	4220-1 677 (700-1)		4220-2 677 (700-2)	4340-2¾ 797 (800-2¾)

MIRL Rwy 4-22 and 14-32 **📶**

FAF to MAP 7.8 NM

Knots	60	90	120	150	180
Min:Sec	7:48	5:12	3:54	3:07	2:36