

APP CRS	Rwy Idg	3202
183°	TDZE	287
	Apt Elev	287

RNAV (GPS) RWY 18

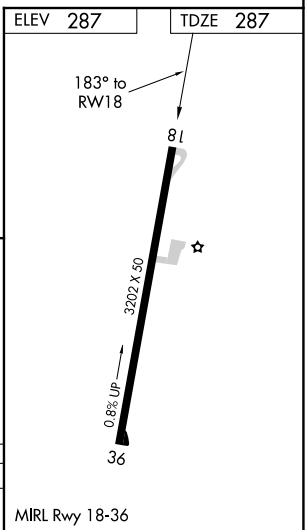
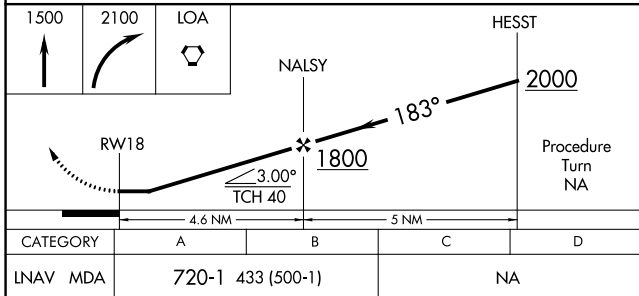
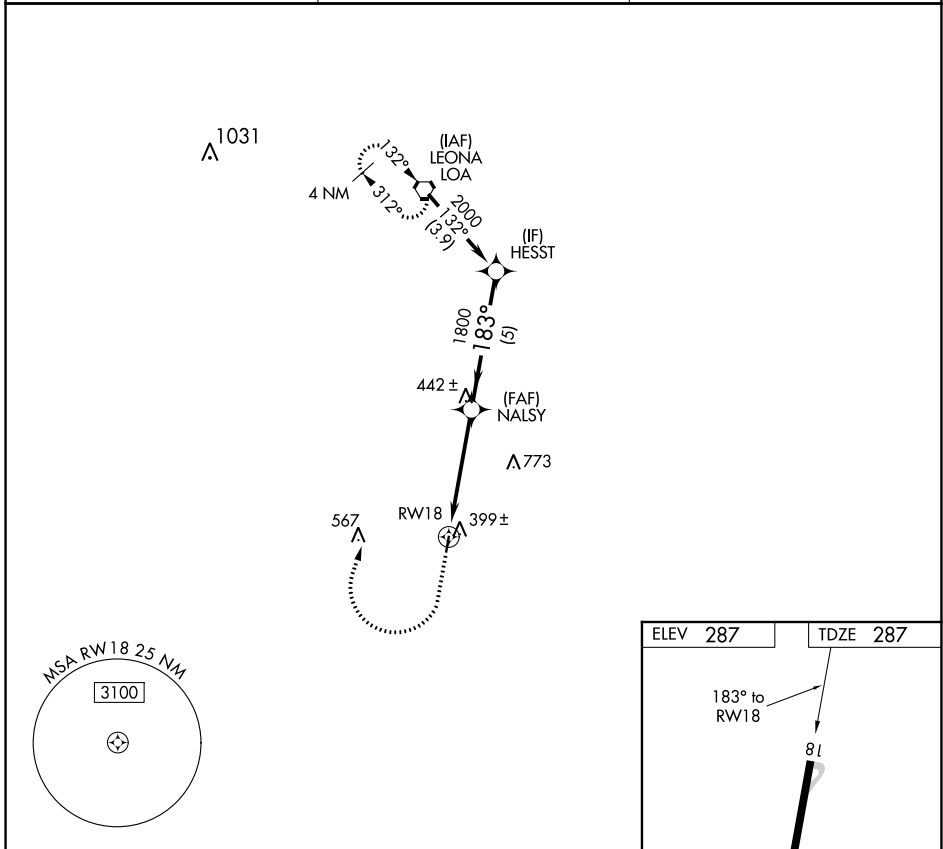
MADISONVILLE MUNI (51R)

RNP APCH.

▼ Use Huntsville Muni altimeter setting.
▲ NA Procedure NA at night.
 Rwy 18 helicopter visibility reduction below 1 SM NA.

MISSED APPROACH: Climb to 1500, then climbing right turn to 2100 direct LOA VORTAC and hold.

UTS ASOS 119.425	HOUSTON CENTER 134.8 269.6	CTAF 122.9
----------------------------	--------------------------------------	----------------------



SC-5, 16 JUL 2020 to 13 AUG 2020

SC-5, 16 JUL 2020 to 13 AUG 2020