

ECHOO ONE DEPARTURE (RNAV)

AL-6851 (FAA)

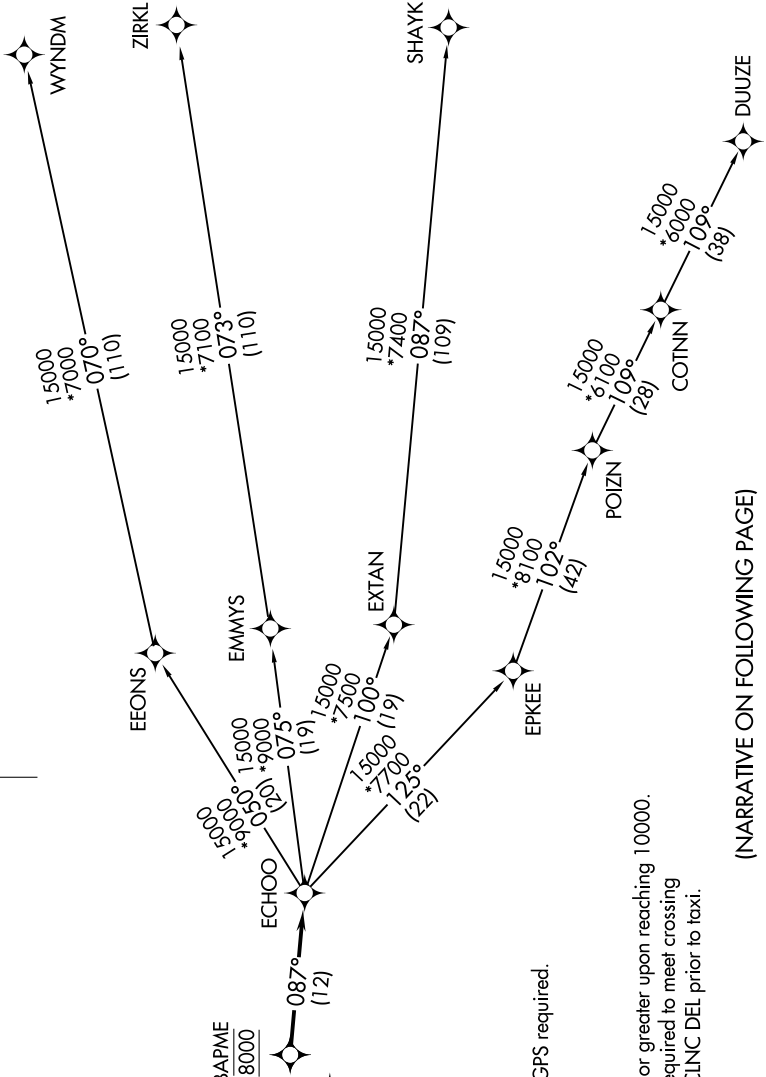
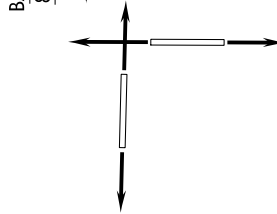
SW-1, 16 JUL 2020 to 13 AUG 2020

TOP ALTITUDE:
FL230

TAKEOFF MINIMUMS

Rwys 8, 17, 26, 35: Standard.

ATIS
119.025
CLINC DEL
124.7
CLINC DEL
121.75 (when hwr closed)
DENVER DEP CON
128.25 371.95



- NOTE: DME/DME/IRU or GPS required.
- NOTE: RNAV 1.
- NOTE: Turbojets only.
- NOTE: RADAR required.
- NOTE: Accelerate to 250K or greater upon reaching 10000.
If slower speed is required to meet crossing restrictions advise CLINC DEL prior to taxi.

(NARRATIVE ON FOLLOWING PAGE)

SW-1, 16 JUL 2020 to 13 AUG 2020

ECHOO ONE DEPARTURE (RNAV)