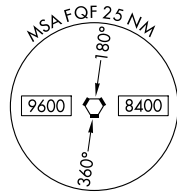
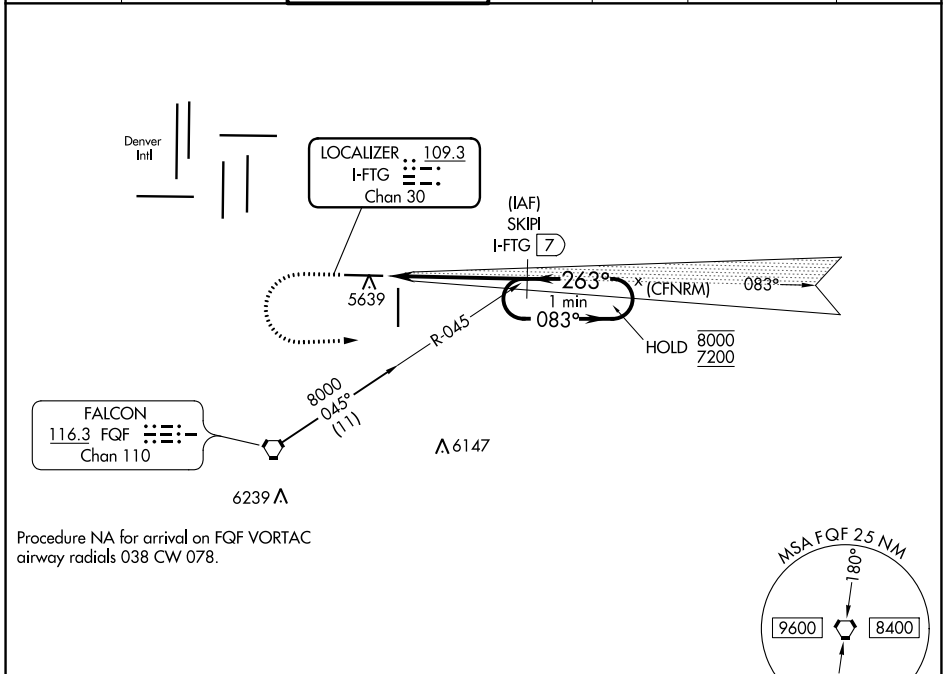


LOC/DME I-FTG 109.3 Chan 30	APP CRS 263°	Rwy Idg TDZE Apt Elev	8002 5489 5515
--	------------------------	-----------------------------	---

ILS or LOC RWY 26

COLORADO AIR AND SPACE PORT (CFO)

DME required.		MALSR	MISSED APPROACH: Climb to 6100 then climbing left turn to 7200 on heading 080° and on FQF VORTAC R-045 to SKIPI/I-FTG 7 DME and hold.			
⚠ For inop ALS, increase S-LOC 26 Cat C/D visibility to 1½ SM.			GND CON 124.7	CLNC DEL 124.7	CLNC DEL 121.75 (When twr closed)	UNICOM 122.95
ATIS 119.025	DENVER APP CON 128.25 371.95	FRONT RANGE TOWER* 120.2 (CTAF)				



ELEV 5515	TDZE 5489	Λ 6529		
6100 7200 FQF R-045 SKIPI I-FTG 7 hdg 080° One Minute Holding Pattern				
263° 5.2 NM from FAF 5538* 5559± TWR 5687 8000 X 100 0.5% UP/DOWN 0.4% 0.5% 35				
*LOC only *I-FTG 2.9 I-FTG 1.7 7200 8000 7200 083° 263° GS 3.00° TCH 50				
CATEGORY	A	B	C	D
S-ILS 26	5689-½ 200 (200-½)			
S-LOC 26	5900-½ 411 (400-½)		5900-¾ 411 (400-¾)	
CIRCLING	6000-1 485 (500-1)		6100-1½ 6300-2½ 585 (600-1½) 785 (800-2½)	

SW-1, 16 JUL 2020 to 13 AUG 2020

SW-1, 16 JUL 2020 to 13 AUG 2020