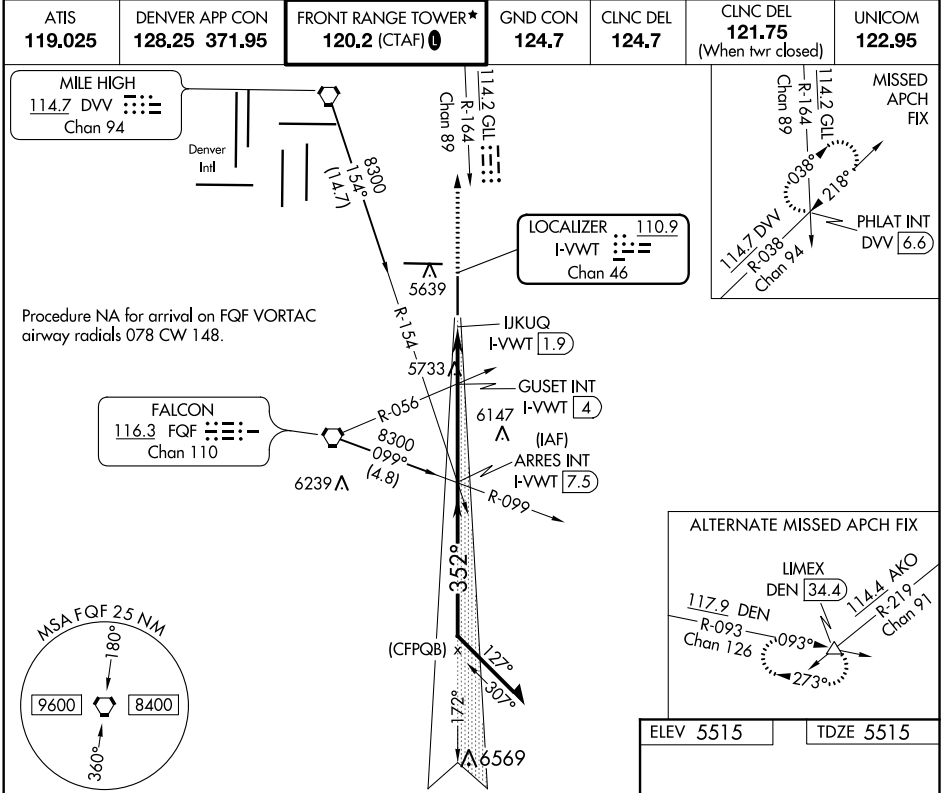


LOC/DME I-VVWT <b>110.9</b> Chan <b>46</b>	APP CRS <b>352°</b>	Rwy Idg TDZE Apt Elev <b>8000</b> <b>5515</b> <b>5515</b>
--	------------------------	--

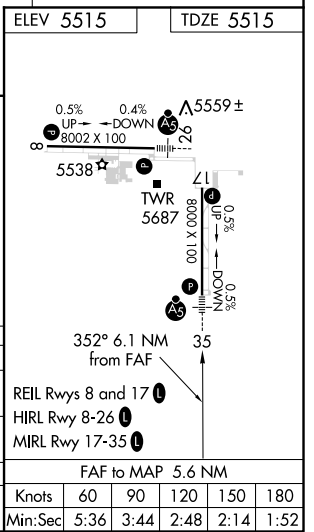
# ILS or LOC RWY 35

COLORADO AIR AND SPACE PORT (CFO)

For inop ALS, increase S-LOC 35 Cats C and D visibility to 2½ SM.	MALSR	MISSED APPROACH: Climb to 7500 on heading 352° and on GLL VOR/DME R-164 to PHLAT INT/DVV 6.6 DME and hold.				
		ATIS <b>119.025</b>	DENVER APP CON <b>128.25 371.95</b>	FRONT RANGE TOWER* <b>120.2 (CTAF)</b>	GND CON <b>124.7</b>	CLNC DEL <b>124.7</b>



7500 hdg 352°	GLL R-164	PHLAT INT	ARRES INT I-VVWT 7.5	Remain within 10 NM
*LOC only	*I-VVWT IJKUQ I-VVWT 1.9	*I-VVWT 3	7500	7900
		GUSSET INT I-VVWT 4	7500	7500
			6300*	GS 3.00° TCH 54
CATEGORY	A	B	C	D
S-ILS 35	5715-½		200 (200-½)	
S-LOC 35	6300-½ 785 (800-½)	6300-¾ 785 (800-¾)	6300-1¾ 785 (800-1¾)	
GUSSET FIX MINIMUMS (DUAL VOR RECEIVERS OR DME REQUIRED)				
S-LOC 35	6040-½	525 (600-½)	6040-1	525 (600-1)



SW-1, 16 JUL 2020 to 13 AUG 2020

SW-1, 16 JUL 2020 to 13 AUG 2020