

# PIKES TWO DEPARTURE

AL-6851 (FAA)

COLORADO AIR AND SPACE PORT (CFO)  
DENVER, COLORADO

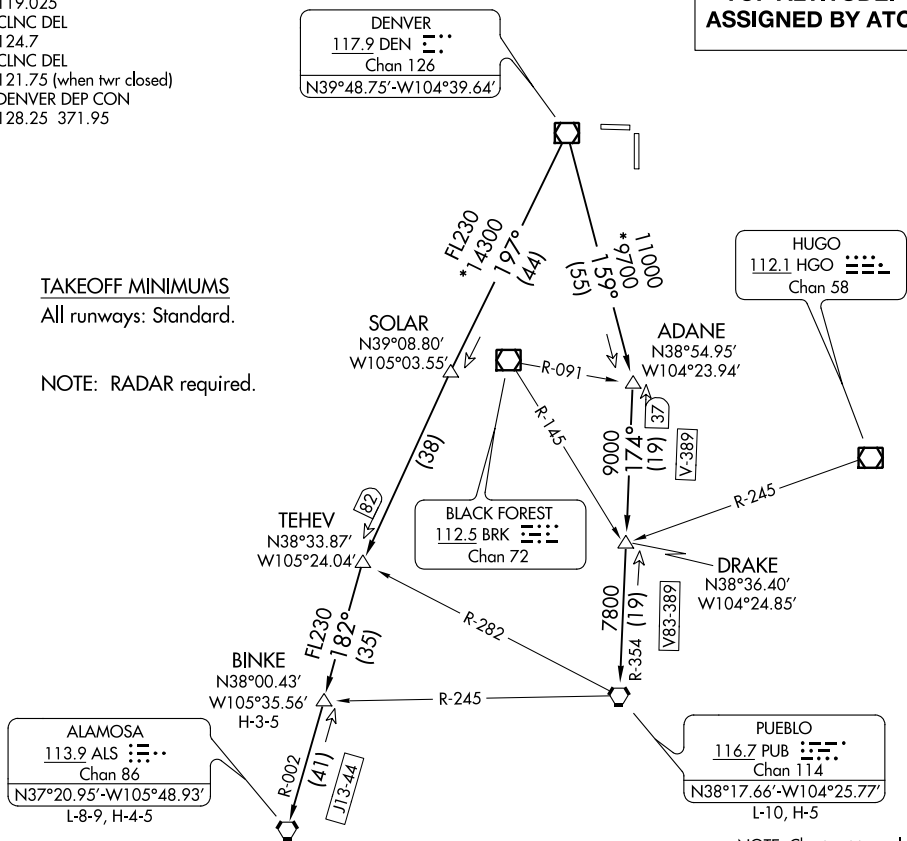
ATIS  
119.025  
CLNC DEL  
124.7  
CLNC DEL  
121.75 (when twr closed)  
DENVER DEP CON  
128.25 371.95

**TOP ALTITUDE:  
ASSIGNED BY ATC**

TAKEOFF MINIMUMS

All runways: Standard.

NOTE: RADAR required.



SW-1, 16 JUL 2020 to 13 AUG 2020

SW-1, 16 JUL 2020 to 13 AUG 2020

**DEPARTURE ROUTE DESCRIPTION**

TAKEOFF ALL RUNWAYS: Fly assigned heading and altitude for RADAR vectors to assigned route. Expect filed altitude 10 minutes after departure.

LOST COMMUNICATIONS: If no transmissions are received within one minute after departure, maintain assigned heading until 7000 feet, then climb to filed altitude via direct DEN VOR/DME, thence via assigned transition. If filed altitude is above 10000 feet, cross DEN VOR/DME at or above 11000 feet.

ALAMOSA TRANSITION (PIKES2.ALS): From over DEN VOR/DME on DEN R-197 to TEHEV, then on ALS R-002 to ALS VORTAC.

BINKE TRANSITION (PIKES2.BINKE): From over DEN VOR/DME on DEN R-197 to TEHEV, then on ALS R-002 to BINKE.

PUEBLO TRANSITION (PIKES2.PUB): From over DEN VOR/DME on DEN R-159 to ADANE, then on PUB R-354 to PUB VORTAC.