

WAAS CH <b>82209</b> <b>W17A</b>	APP CRS <b>172°</b>	Rwy Idg TDZE Apt Elev	<b>8000</b> <b>5491</b> <b>5515</b>
--	------------------------	-----------------------------	---

# RNAV (GPS) RWY 17

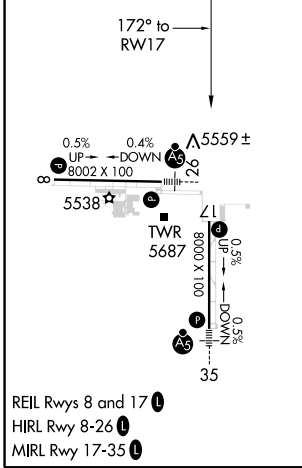
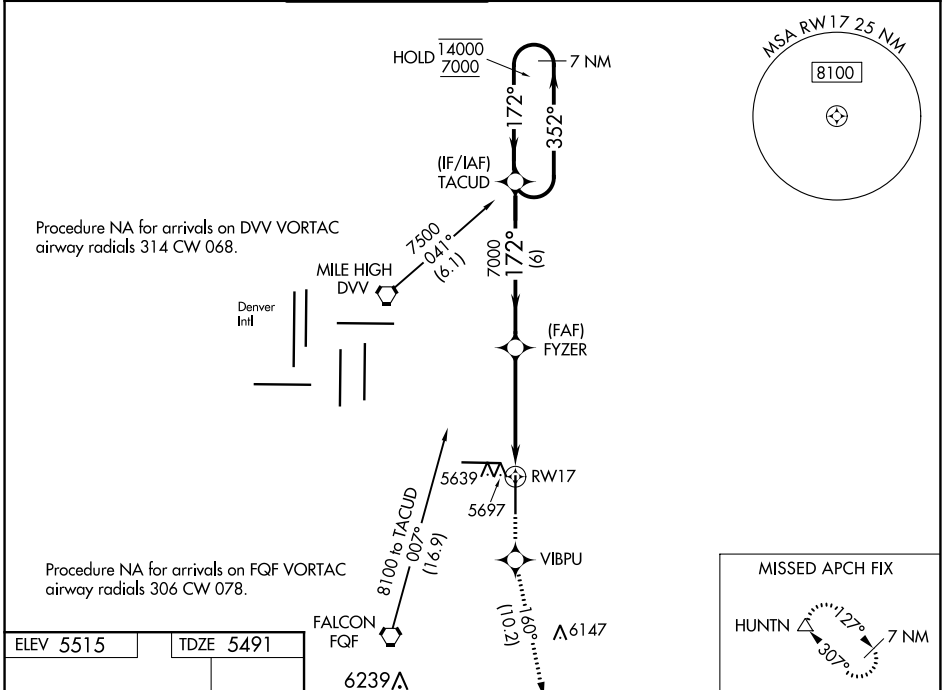
COLORADO AIR AND SPACE PORT (CFO)

RNP APCH.

▼ For uncompensated Baro-VNAV systems, LNAV/VNAV NA below -25°C or above 48°C.

▲ MISSED APPROACH: Climb to 8500 direct VIBPU and on track 160° to HUNTN and hold.

ATIS <b>119.025</b>	DENVER APP CON <b>128.25 371.95</b>	FRONT RANGE TOWER* <b>120.2 (CTAF) 0</b>	GND CON <b>124.7</b>	CLNC DEL <b>124.7</b>	CLNC DEL <b>121.75</b> (When twr closed)	UNICOM <b>122.95</b>
------------------------	--	---	-------------------------	--------------------------	--	-------------------------



7 NM Holding Pattern	TACUD	FYZER	8500	VIBPU	tr 160°	HUNTN
14000 7000	← 352°	→ 172°	7000	*1.5 NM to RWY 17	*LNAV only	RWY 17
GP 3.00°	TCH 55	6 NM	3.1 NM	1.5 NM		
CATEGORY	A	B	C	D		
LPV DA		5691-3/4	200 (200-3/4)			
LNAV/VNAV DA		5916-1 3/8	425 (500-1 3/8)			
LNAV MDA	6000-1	509 (500-1)	6000-1 1/2	509 (500-1 1/2)		
CIRCLING	6000-1	485 (500-1)	6100-1 1/2 585 (600-1 1/2)	6300-2 1/2 785 (800-2 1/2)		

SW-1, 16 JUL 2020 to 13 AUG 2020

SW-1, 16 JUL 2020 to 13 AUG 2020