
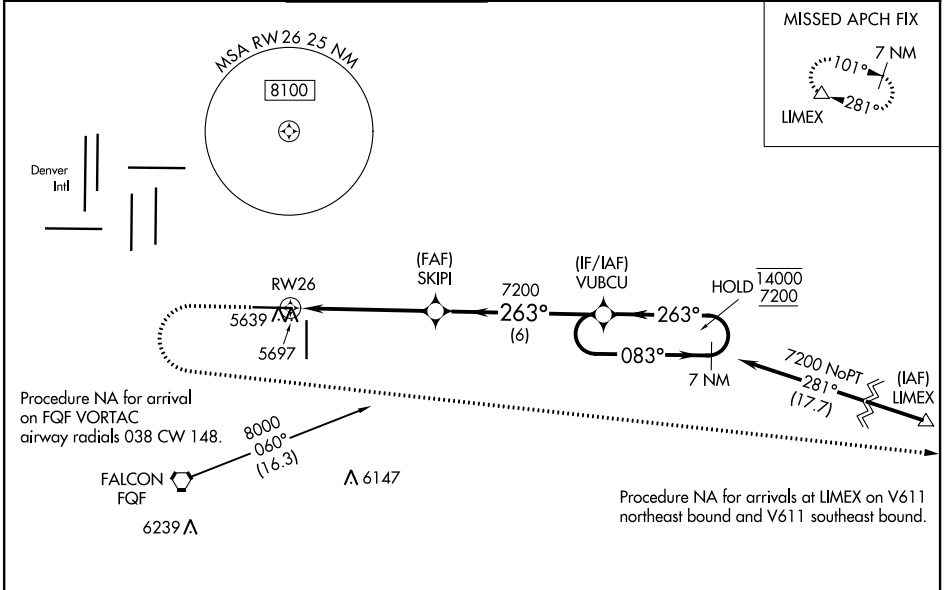


| | | | |
|--|------------------------|-----------------------------|---|
| WAAS CH 93909 W26A | APP CRS 263° | Rwy Idg TDZE Apt Elev | 8002 5489 5515 |
|--|------------------------|-----------------------------|---|

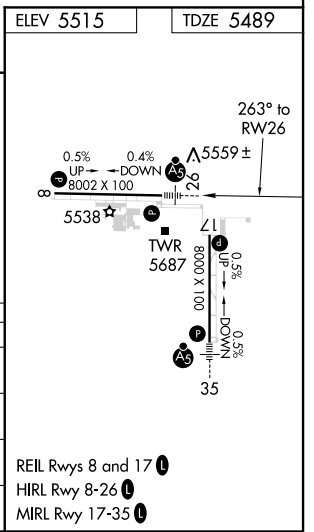
RNAV (GPS) RWY 26

COLORADO AIR AND SPACE PORT (CFO)

| | | | | | | | |
|--|--|--|--|---|--------------------------|--|-------------------------|
| RNP APCH. | | FRONT RANGE TOWER* 120.2 (CTAF) | | GND CON 124.7 | CLNC DEL 124.7 | CLNC DEL 121.75 (When twr closed) | UNICOM 122.95 |
| <p>⚠ For uncompensated Baro-VNAV systems, LNAV/VNAV NA below -25°C or above 48°C. For inop ALS, increase LNAV/VNAV all Cats visibility to 1½ SM, and increase LNAV Cat C/D visibility to 1½ SM.</p> | | <p>MALSR</p>  | | <p>MISSED APPROACH: (Do not exceed 200K until LIMEX) Climb to 6100 then climbing left turn to 7600 direct LIMEX and hold.</p> | | | |



| | | | | |
|---|--------------------|-------------|-------------------------|-------------------------|
| ELEV 5515 | TDZE 5489 | | | |
| 6100 | 7600 | LIMEX | | |
| <p>*LNAV only</p> <p>*1.4 NM to RW26</p> <p>RW26</p> <p>1.4 NM</p> <p>3.8 NM</p> <p>6 NM</p> <p>7200</p> <p>263°</p> <p>083°</p> <p>14000 7200</p> <p>GP 3.00° TCH 50</p> | | | | |
| CATEGORY | A | B | C | D |
| LPV DA | 5689-½ 200 (200-½) | | | |
| LNAV/VNAV DA | 5858-¾ 369 (400-¾) | | | |
| LNAV MDA | 5960-½ | 471 (500-½) | 5960-1 | 471 (500-1) |
| CIRCLING | 6000-1 | 485 (500-1) | 6100-1½ 585 (600-1½) | 6300-2½ 785 (800-2½) |



SW-1, 16 JUL 2020 to 13 AUG 2020

SW-1, 16 JUL 2020 to 13 AUG 2020