

ROCKIES FIVE DEPARTURE

AL-6851 (FAA)

COLORADO AIR AND SPACE PORT (CFO)
DENVER, COLORADO

**TOP ALTITUDE:
ASSIGNED BY ATC**

ATIS
119.025
CLNC DEL
124.7
DENVER CLNC DEL
121.75 (When tower closed)
DENVER DEP CON
128.25 371.95

SW-1, 16 JUL 2020 to 13 AUG 2020

KREMNING
113.8 RLG
Chan 85
N40°00.16'-W106°26.55'
L-9, H-3

MEEKER
115.2 EKR
Chan 99
N40°04.05'-W107°55.50'
L-9, H-3

RIFLE
110.6 RIL
Chan 43
N39°31.70'-W107°43.18'

RED TABLE
113.0 DBL
Chan 77
N39°26.36'-W106°53.68'
L-9, H-3

DOVE CREEK
114.6 DVC
Chan 93
N37°48.52'-W108°55.88'
L-9, H-3

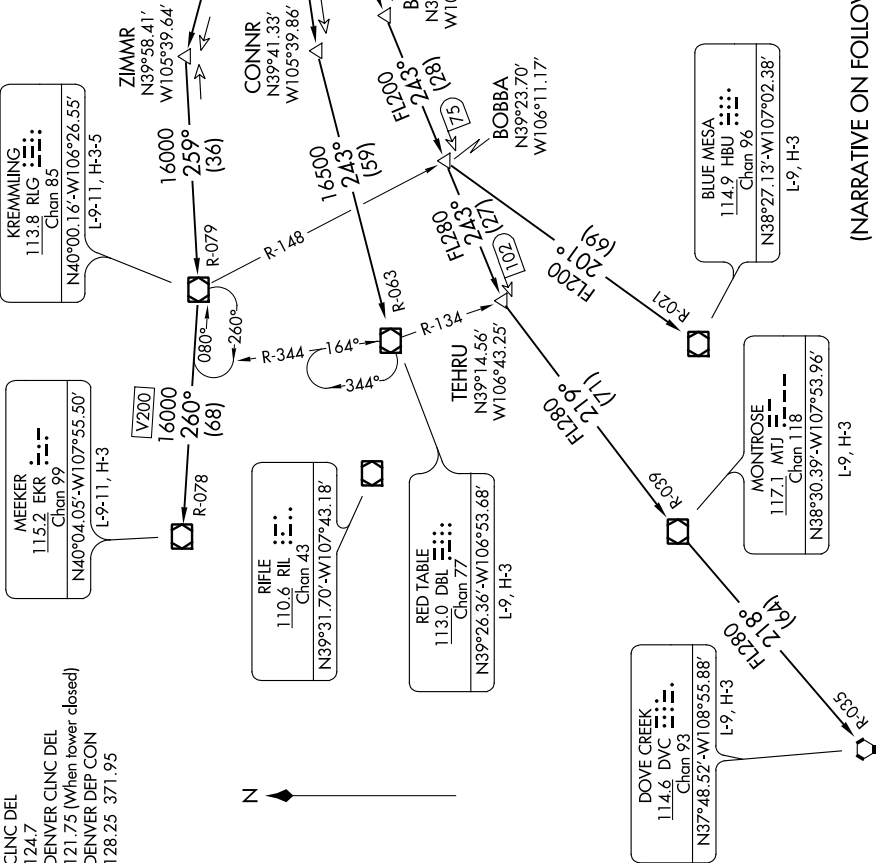
MONTROSE
117.1 MTJ
Chan 118
N38°30.39'-W107°53.96'
L-9, H-3

BLUE MESA
114.9 HBU
Chan 96
N38°27.13'-W107°02.38'
L-9, H-3

BOBBA
N39°23.70'
W106°11.17'

BAYLR
N39°33.20'
W105°37.10'

DENVER
117.9 DEN
Chan 126
N39°48.75'-W104°39.64'



TAKEOFF MINIMUMS
All Runways: Standard.

NOTE: RADAR required.

NOTE: Chart not to scale.

(NARRATIVE ON FOLLOWING PAGE)

SW-1, 16 JUL 2020 to 13 AUG 2020

ROCKIES FIVE DEPARTURE

DENVER, COLORADO
COLORADO AIR AND SPACE PORT (CFO)