

WNGSS ONE DEPARTURE (RNAV)

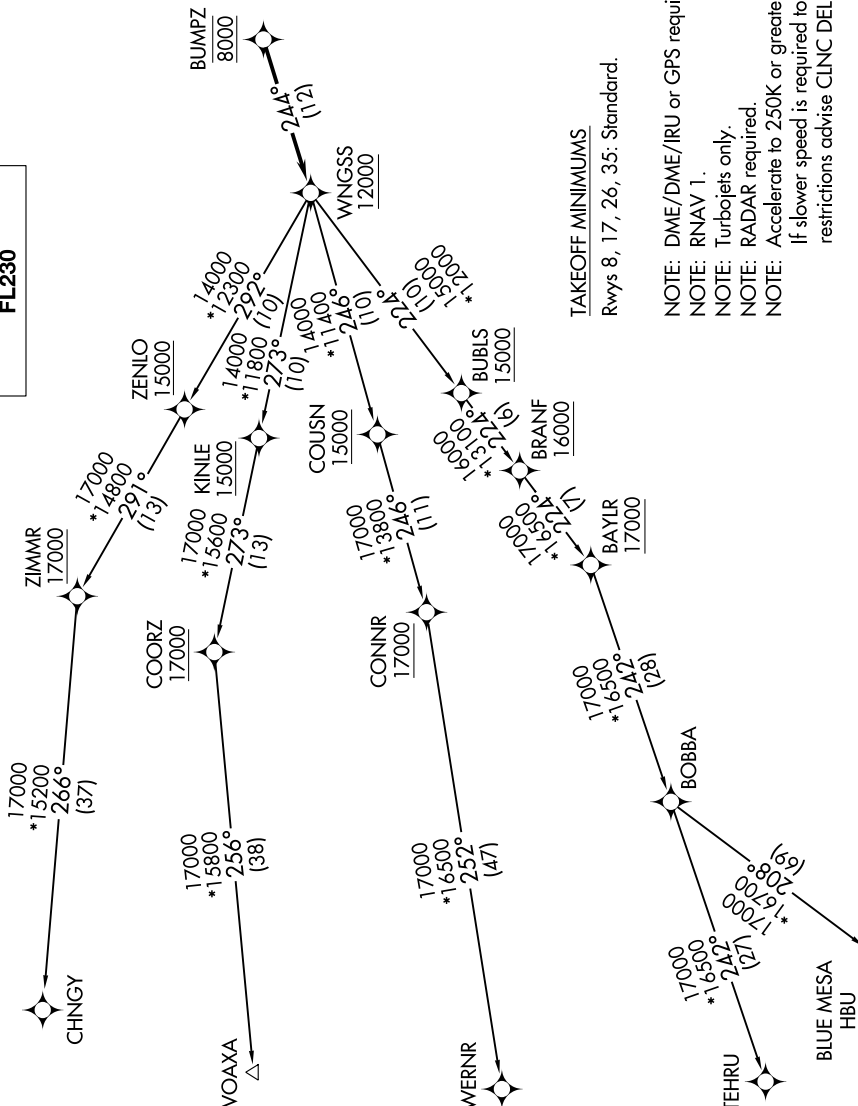
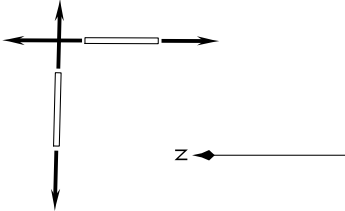
AL-6851 (FAA)

DENVER, COLORADO

SW-1, 16 JUL 2020 to 13 AUG 2020

**TOP ALTITUDE:
FL230**

ATIS
119.025
CLNC DEL
124.7
CLNC DEL
121.75 (when hvr closed)
DENVER DEP CON
128.25 371.95



TAKEOFF MINIMUMS
Rwys 8, 17, 26, 35: Standard.

- NOTE: DME/DME/IRU or GPS required.
- NOTE: RNAV 1.
- NOTE: Turbojets only.
- NOTE: RADAR required.
- NOTE: Accelerate to 250K or greater upon reaching 10000. If slower speed is required to meet crossing restrictions advise CLNC DEL prior to taxi.

(NARRATIVE ON FOLLOWING PAGE)

NOTE: Chart not to scale.

WNGSS ONE DEPARTURE (RNAV)

SW-1, 16 JUL 2020 to 13 AUG 2020