

KUSSO SIX DEPARTURE (RNAV)

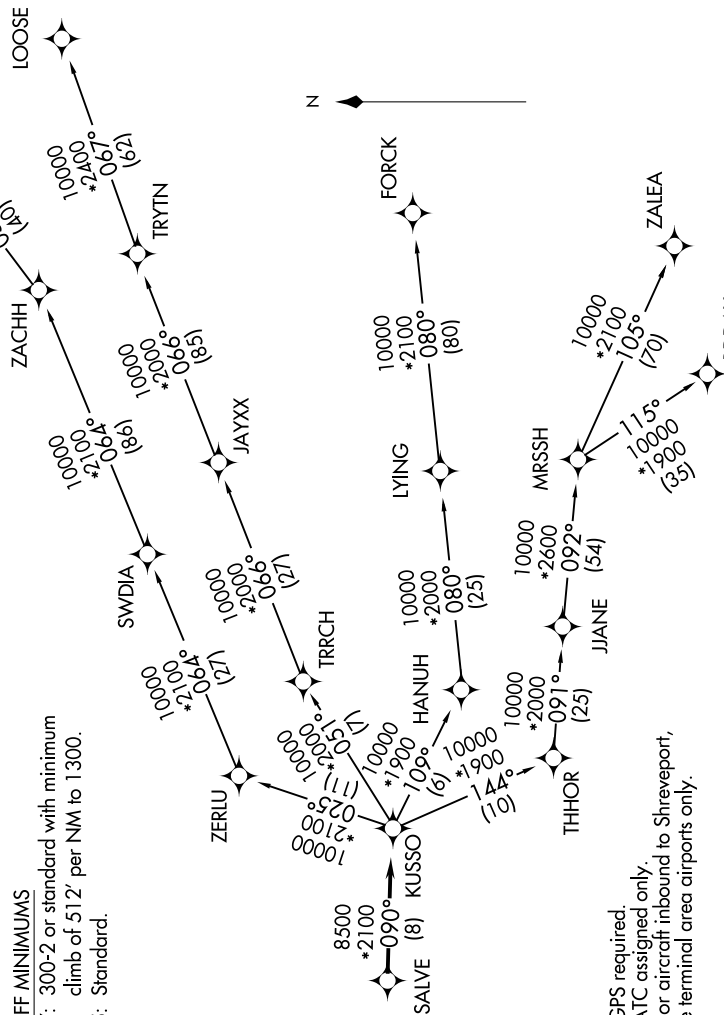
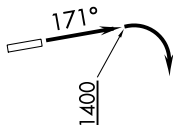
SC-2, 16 JUL 2020 to 13 AUG 2020

**TOP ALTITUDE:
ASSIGNED BY ATC**

TAKEOFF MINIMUMS

Rwy 17: 300-2 or standard with minimum climb of 512' per NM to 1300.
Rwy 35: Standard.

REGIONAL DEP CON
135.975 379.9
CTAF
123.0



- NOTE: RADAR required.
- NOTE: RNAV 1.
- NOTE: DME/DME/IRU or GPS required.
- NOTE: BDDAY transition: ATC assigned only.
- NOTE: MRSSH transition: For aircraft inbound to Shreveport, Jackson and Monroe terminal area airports only.

(NARRATIVE ON FOLLOWING PAGE)

NOTE: Chart not to scale.

SC-2, 16 JUL 2020 to 13 AUG 2020