


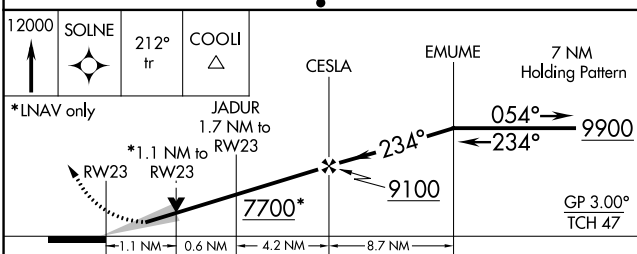
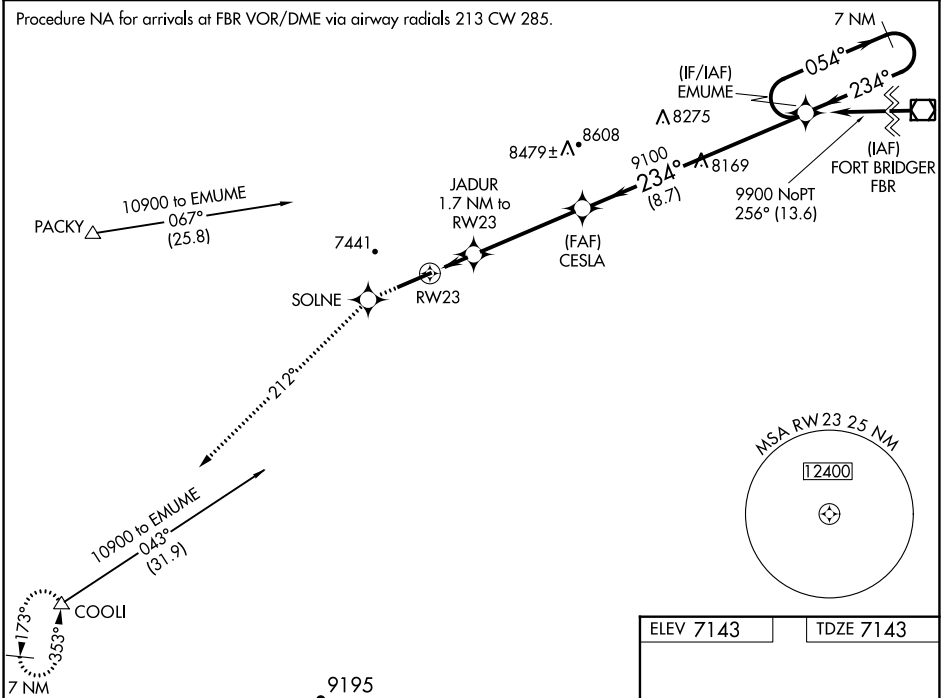
WAAS CH 77905 W23A	APP CRS 234°	Rwy Idg TDZE Apt Elev 7300 7143 7143
--	------------------------	--

RNAV (GPS) RWY 23

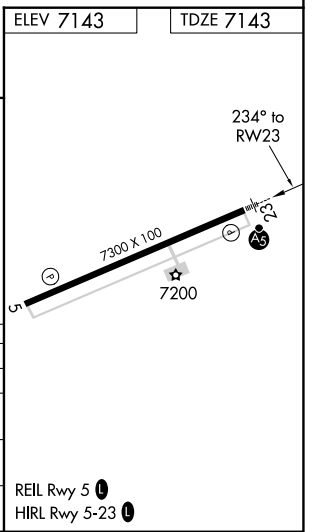
EVANSTON-UINTA COUNTY BURNS FIELD (E V W)

<p>▼ For inoperative MALSR, increase LPV all Cats visibility to 1, LNAV/VNAV Cat D to 1 and LNAV Cat D to 1½. When local altimeter setting not received, procedure NA. For uncompensated Baro-VNAV systems, LNAV/VNAV NA below -29°C (-20°F) or above 34°C (93°F). DME/DME RNP-0.3 NA.</p>	<p>MALSR </p>	<p>MISSED APPROACH: Climb to 1200 direct SOLNE and via 212° track to COOLI and hold, continue climb-in-hold to 1200.</p>
---	--	---

ASOS 120.0	SALT LAKE CENTER 127.7 354.125	GCO 121.72	UNICOM 123.0 (CTAF) 0
----------------------	--	----------------------	--



ELEV 7143	TDZE 7143
-----------	-----------



REIL Rwy 5 **0**
HIRL Rwy 5-23 **0**

CATEGORY	A	B	C	D
LPV DA	7393-½ 250 (300-½)			
LNAV/VNAV DA	7443-½ 300 (300-½)		7443-¾ 300 (300-¾)	
LNAV MDA	7520-½ 377 (400-½)		7520-1 377 (400-1)	
CIRCLING	7580-1 437 (500-1)	7720-1 577 (600-1)	7760-1¾ 617 (700-¾)	7760-2 617 (700-2)

RNAV (GPS) RWY 23

NW-1, 16 JUL 2020 to 13 AUG 2020

NW-1, 16 JUL 2020 to 13 AUG 2020