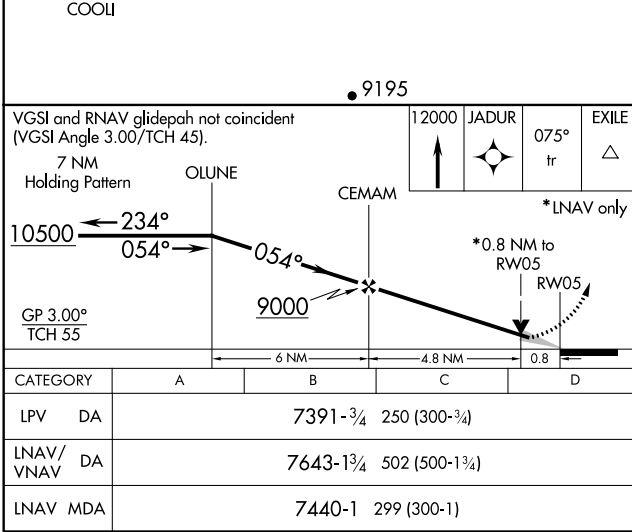
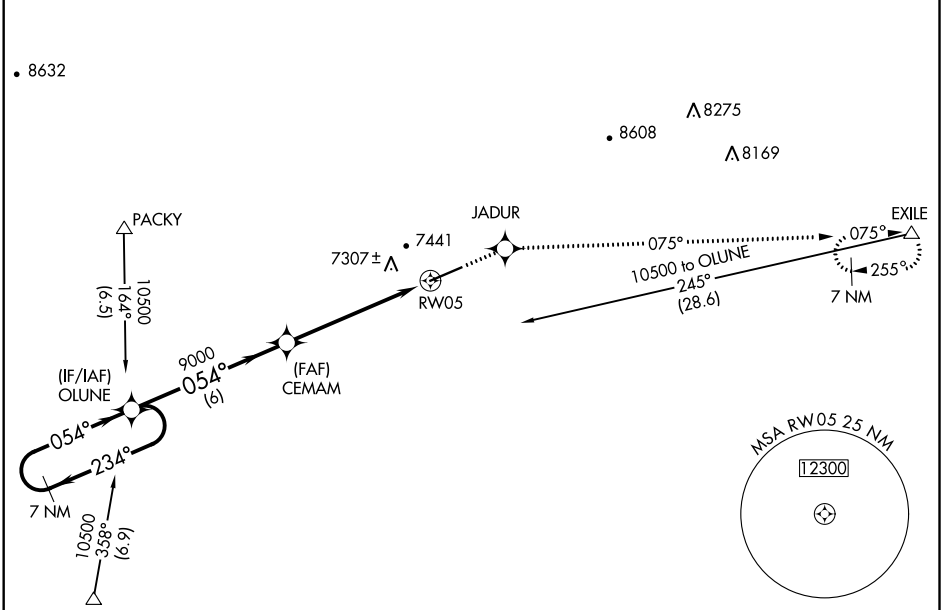


WAAS CH <b>78302</b> <b>W05A</b>	APP CRS <b>054°</b>	Rwy Idg TDZE Apt Elev	<b>7300</b> <b>7141</b> <b>7143</b>
--	------------------------	-----------------------------	---

# RNAV (GPS) RWY 5

EVANSTON-UINTA COUNTY BURNS FIELD (E V W)

<b>RNP APCH.</b> ▼ If local altimeter setting not received, procedure NA. For uncompensated Baro-VNAV systems, LNAV/VNAV NA below -29°C (-20°F) or above 34°C (94°F).		MISSED APPROACH: Climb to 12000 direct JADUR and via 075° track to EXILE and hold, continue climb-in-hold to 12000.	
ASOS <b>120.0</b>	SALT LAKE CENTER <b>127.7 354.125</b>	GCO <b>121.72</b>	UNICOM <b>123.0 (CTAF) 0</b>



ELEV 7143	TDZE 7141
REIL Rwy 5 0 HIRL Rwy 5-23 0	

NW-1, 16 JUL 2020 to 13 AUG 2020

NW-1, 16 JUL 2020 to 13 AUG 2020