

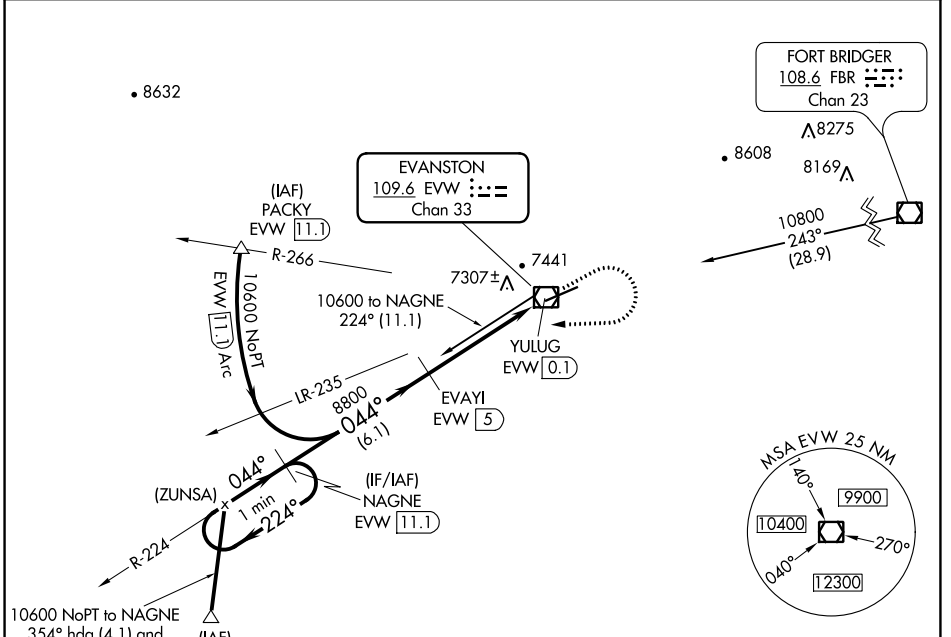
VOR/DME EVW <b>109.6</b> Chan 33	APP CRS <b>044°</b>	Rwy Ldg TDZE <b>7300</b> <b>7141</b> Apt Elev <b>7143</b>
--	------------------------	---

# VOR/DME RWY 5

EVANSTON-UINTA COUNTY BURNS FIELD (EVW)

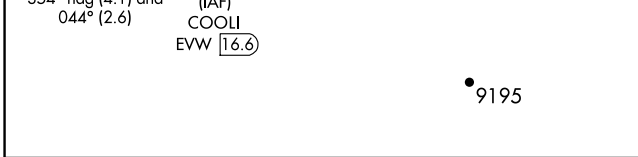
If local altimeter setting not received, procedure NA. MISSED APPROACH: Climb to 7600, then climbing right turn to 10600 via heading 255° and EVW VOR/DME R-224 to NAGNE/11.1 DME and hold, continue climb-in-hold to 10600.

ASOS <b>120.0</b>	SALT LAKE CENTER <b>127.7 354.125</b>	GCO <b>121.72</b>	UNICOM <b>123.0</b> (CTAF) <b>0</b>
----------------------	--	----------------------	--

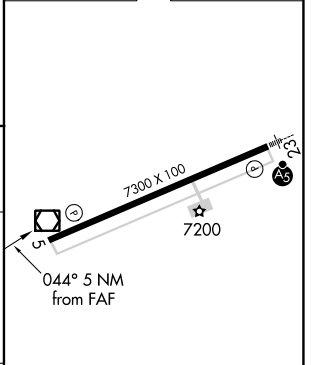


NW-1, 16 JUL 2020 to 13 AUG 2020

NW-1, 16 JUL 2020 to 13 AUG 2020



ELEV 7143	TDZE 7141
-----------	-----------



	NAGNE EVW [11.1]	7600	10600	EVW R-224	NAGNE EVW [11.1]
One Minute Holding Pattern		↑	hdg 255°		
10600	← 224°			EVW [1.2]	YULUG EVW [0.1]
	044°			3.06° TCH 55	
				8800	
				EVAYI EVW [5]	
				6.1 NM	3.8 NM
					1.2 NM

CATEGORY	A	B	C	D
S-5	7560-1	419 (500-1)	7560-1 ¼	419 (500-1 ¼)
CIRCLING	7580-1 437 (500-1)	7720-1 577 (600-1)	7760-1 ¾ 617 (700-1 ¾)	7760-2 617 (700-2)

REIL Rwy 5 **0**  
HIRL Rwy 5-23 **0**