

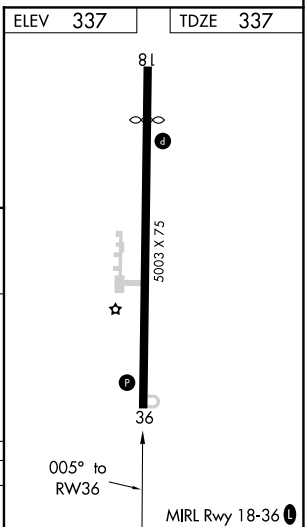
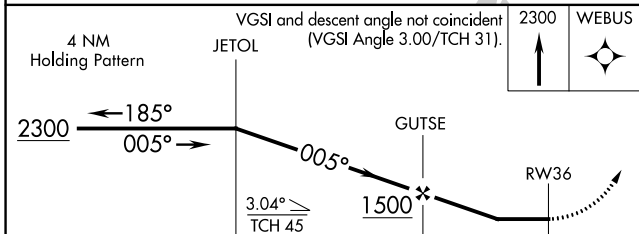
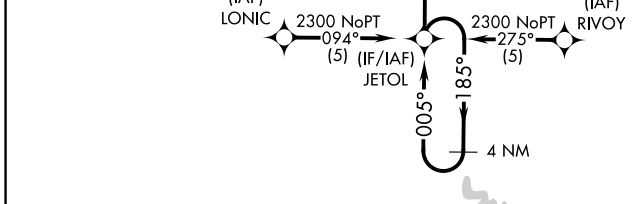
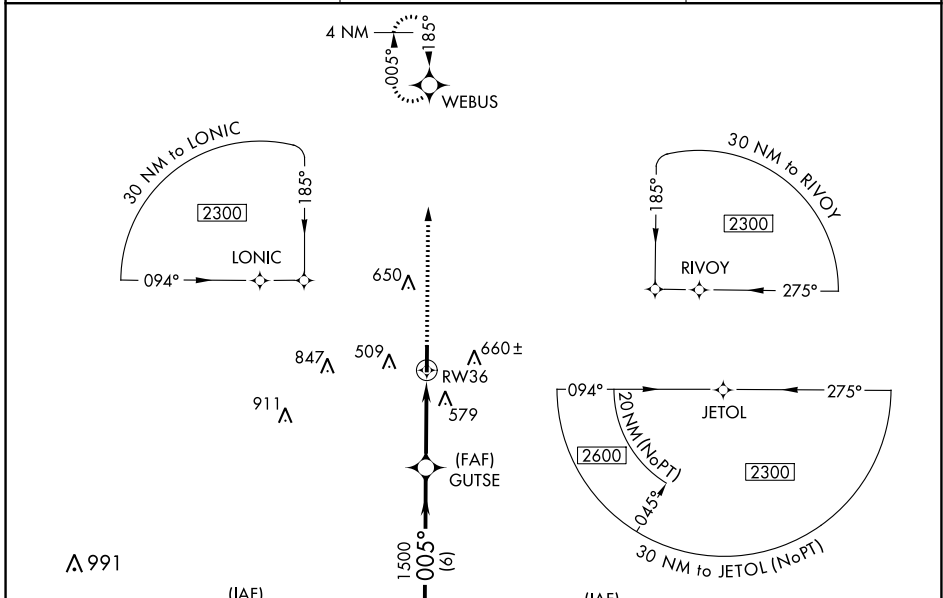
APP CRS	Rwy Idg	5003
005°	TDZE	337
	Apt Elev	337

RNAV (GPS) RWY 36

DR C P SAVAGE SR (53A)

RNP APCH.	Use American altimeter setting, when not received use Macon altimeter setting and increase all MDA 20 feet, increase LNAV Cat C visibility to 1 $\frac{3}{4}$. Procedure NA at night. Rwy 36 helicopter visibility reduction below 1 SM NA.	MISSED APPROACH: Climb to 2300 direct WEBUS WP and hold.
▼ ▲ NA		

ACJ AWOS-3 128.375	ATLANTA APP CON * 124.2 279.6	CTAF 122.9 ①
------------------------------	---	-------------------------------



CATEGORY	A	B	C	D
LNAV MDA	900-1	563 (600-1)	900-1 $\frac{5}{8}$ 563 (600-1 $\frac{5}{8}$)	NA

SE-4, 16 JUL 2020 to 13 AUG 2020

SE-4, 16 JUL 2020 to 13 AUG 2020