

WAAS CH <b>93515</b> <b>W36A</b>	APP CRS <b>002°</b>	Rwy ldg <b>3513</b> TDZE <b>73</b> Apt Elev <b>74</b>
--	------------------------	---

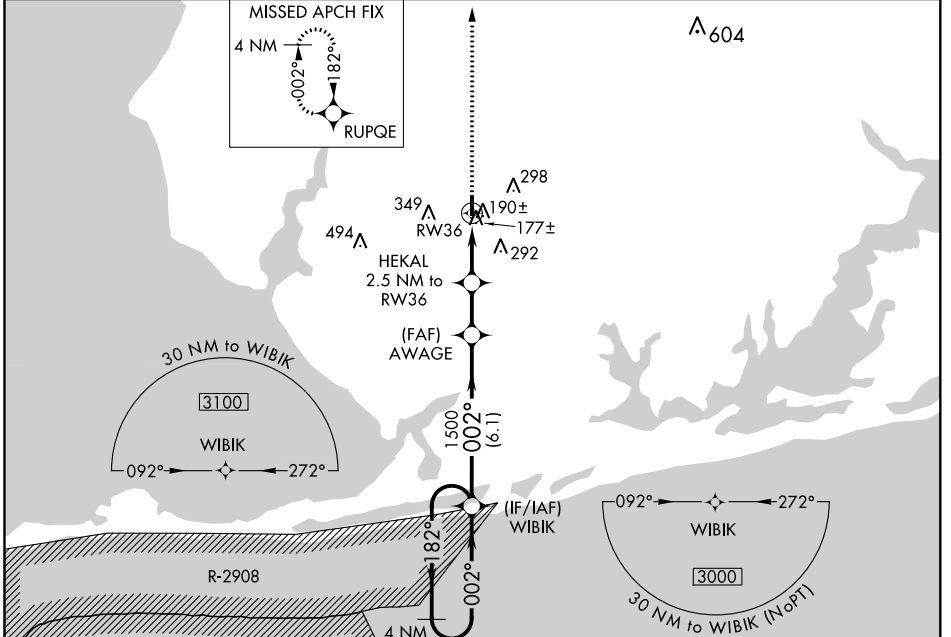
# RNAV (GPS) RWY 36

FOLEY MUNI (5R.4)

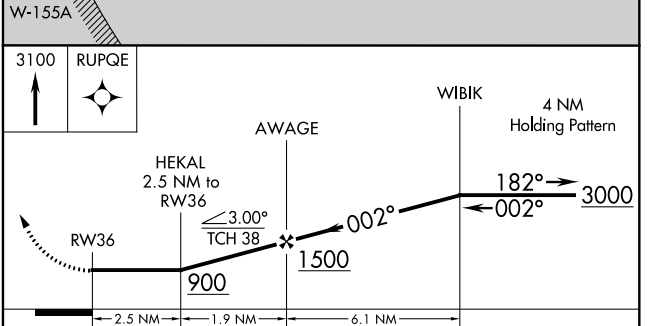
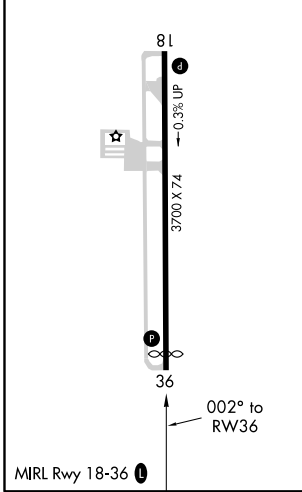
**NA** DME/DME RNP-0.3 NA. Procedure NA at night. Helicopter visibility reduction below 1 SM NA. Use Fairhope altimeter setting. When not received, use Gulf Shores altimeter setting and increase all MDA 20 feet; increase LNAV Cat C visibility 1/8 mile and Circling Cat C visibility 1/4 mile.

**MISSED APPROACH:** Climb to 3100 direct RUPQE and hold, continue climb-in-hold to 3100.

CQF AWOS-3PT <b>118.425</b>	PENSACOLA APP CON <b>118.6 380.6</b>	UNICOM <b>123.05 (CTAF) 0</b>
--------------------------------	---	----------------------------------



ELEV 74	TDZE 73
---------	---------



CATEGORY	A	B	C	D
LP MDA	460-1	387 (400-1)	460-1 1/8 387 (400-1 1/8)	NA
LNAV MDA	480-1	407 (500-1)	480-1 1/8 407 (500-1 1/8)	NA
<b>C</b> CIRCLING	680-1	606 (700-1)	880-2 1/4 806 (900-2 1/4)	NA

SE-4, 16 JUL 2020 to 13 AUG 2020

SE-4, 16 JUL 2020 to 13 AUG 2020