


| | | | |
|--|------------------------|-----------------------------|---|
| WAAS CH 57999 W35A | APP CRS 353° | Rwy Idg TDZE Apt Elev | 6002 697 700 |
|--|------------------------|-----------------------------|---|

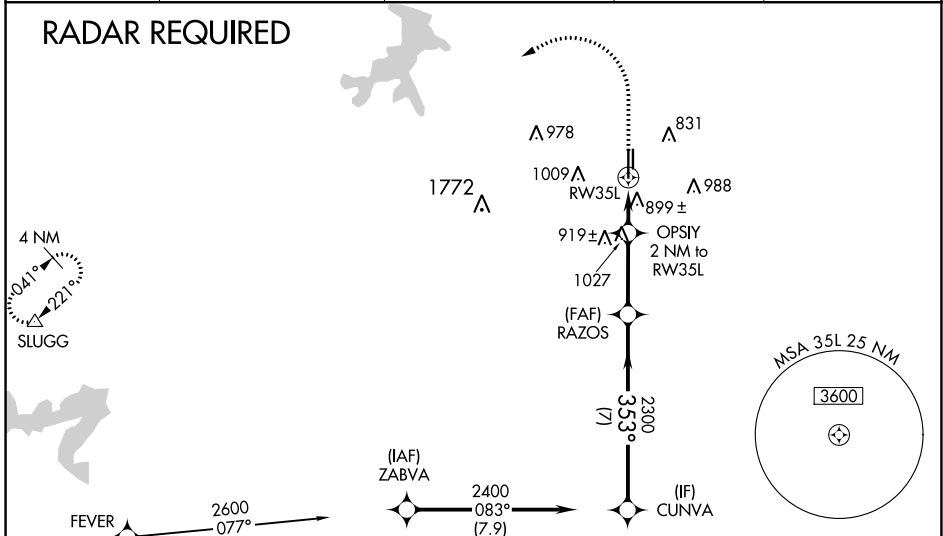
RNAV (GPS) RWY 35L

FORT WORTH SPINKS (FWS)

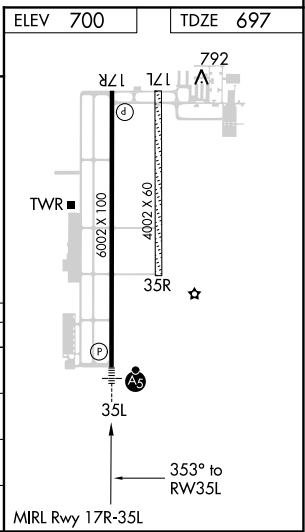
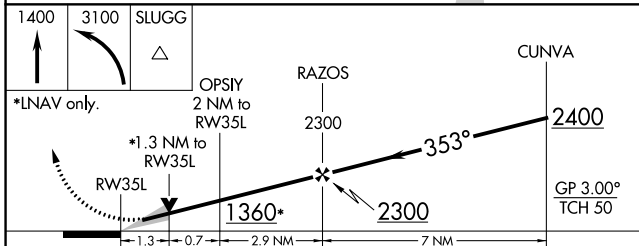
⚠ For uncompensated Baro-VNAV systems, LNAV/VNAV NA below -16°C (4°F) or above 39°C (102°F). Circling NA west of Rwy 17R-35L. DME/DME RNP-0.3 NA. Baro-VNAV and VDP NA when using Fort Worth Meacham altimeter setting. When local altimeter setting not received, use Fort Worth Meacham altimeter setting and increase all DA 37 feet and all MDA 40 feet, increase LNAV/VNAV all Cats visibility 1/8 mile. For inop MALSRL increase LNAV/VNAV all Cats visibility to 1/8 mile and increase LNAV Cats C/D visibility to 1/8 mile. For inop MALSRL when using Fort Worth Meacham altimeter setting, increase LNAV/VNAV all Cats visibility to 1/4 mile and LNAV Cats C/D visibility to 1/8 mile.

MALSRL

MISSED APPROACH:
 Climb to 1400 then climbing left turn to 3100 direct SLUGG and hold.

| | | | | |
|------------------------|--|---|---------------------------|------------------------|
| ATIS 120.025 | REGIONAL APP CON 135.975 379.9 | SPINKS TOWER ★ 124.625 (CTAF)  | GND CON 119.475 | UNICOM 122.7 |
|------------------------|--|---|---------------------------|------------------------|



| | |
|----------|----------|
| ELEV 700 | TDZE 697 |
|----------|----------|



| CATEGORY | A | B | C | D |
|--------------|------------------------|---|---|---|
| LPV DA | 897-1/2 | | 200 (200-1/2) | |
| LNAV/VNAV DA | 1193-1 1/4 | | 496 (500-1 1/4) | |
| LNAV MDA | 1160-1/2 463 (500-1/2) | | 1160-1 463 (500-1) | |
| CIRCLING | 1200-1 500 (500-1) | | 1200-1 1/2 560 (500-1/2) 1260-2 560 (600-2) | |

SC-2, 16 JUL 2020 to 13 AUG 2020

SC-2, 16 JUL 2020 to 13 AUG 2020