

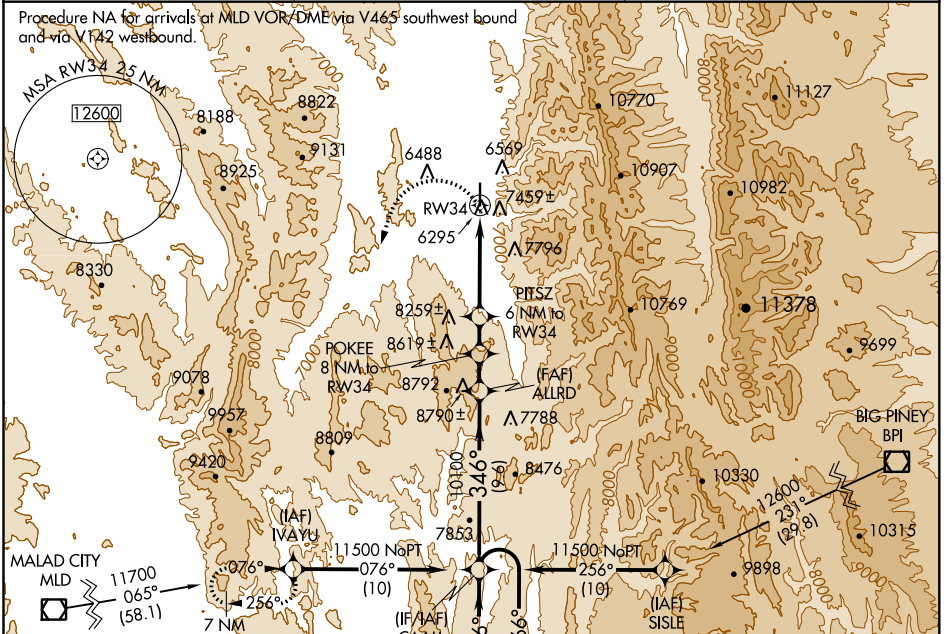
APP CRS 346°	Rwy Idg 7025
	TDZE 6221
	Apt Elev 6221

RNAV (GPS) RWY 34

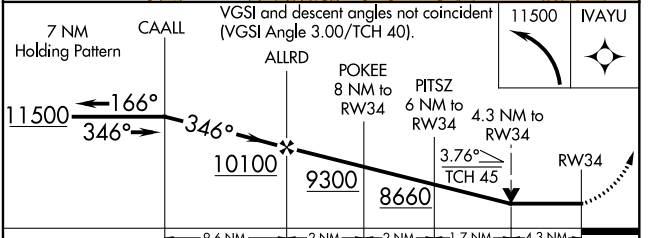
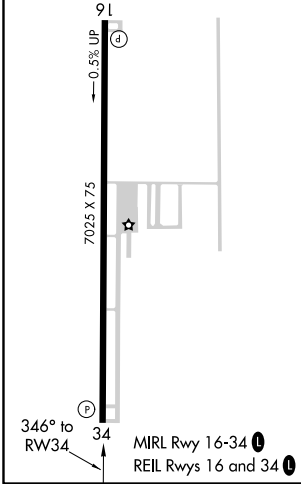
AFTON MUNI (AFO)

NA DME/DME RNP-0.3 NA. Circling NA east of Rwy 16-34.
 Helicopter visibility reduction below 3/4 SM NA. If local altimeter setting not received, procedure NA.
MISSED APPROACH: Climbing left turn to 11500 direct IVAYU and hold.

AWOS-3P 119.025	SALT LAKE CENTER 128.35 381.6	UNICOM 122.8 (CTAF)
---------------------------	---	-------------------------------



ELEV 6221	TDZE 6221
-----------	-----------



CATEGORY	A	B	C	D
LNAV MDA	7620-1 1/4 1399 (1400-1 1/4)	7620-1 1/2 1399 (1400-1 1/2)	7620-3 1399 (1400-3)	NA
CIRCLING	7620-1 1/4 1399 (1400-1 1/4)	7620-1 1/2 1399 (1400-1 1/2)	7620-3 1399 (1400-3)	NA

NW-1, 16 JUL 2020 to 13 AUG 2020

NW-1, 16 JUL 2020 to 13 AUG 2020