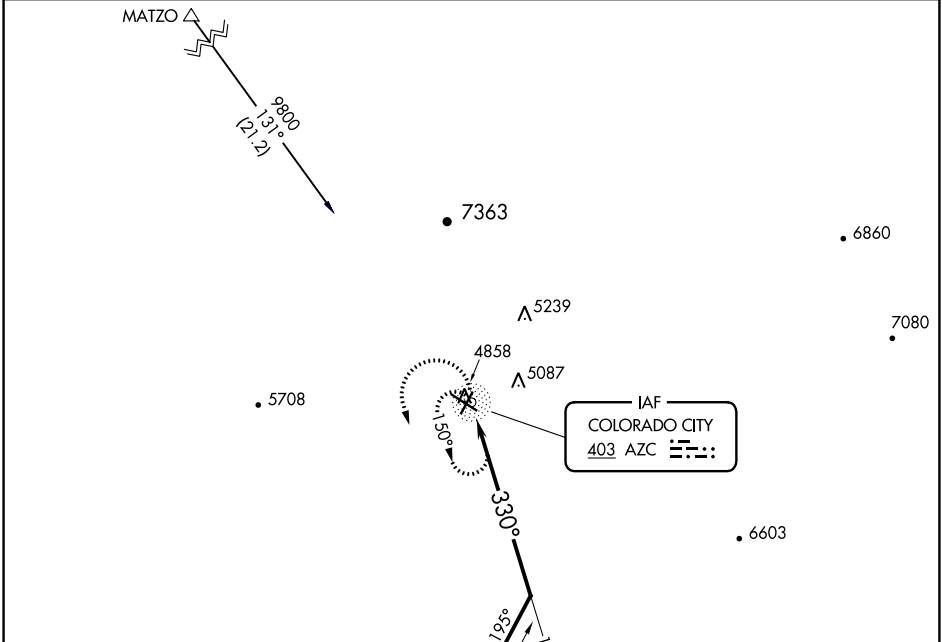


NDB AZC 403	APP CRS 330°	Rwy Idg TDZE Apt Elev N/A N/A 4874
-----------------------	------------------------	--

NDB-A
COLORADO CITY MUNI (AZC)

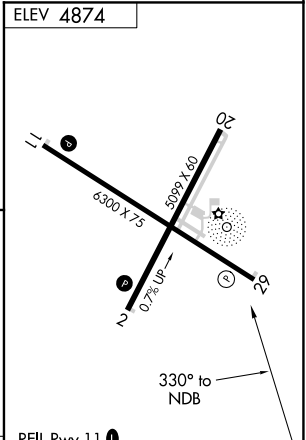
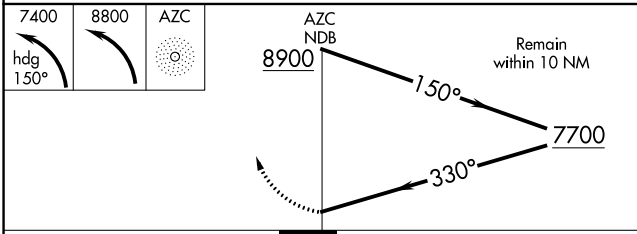
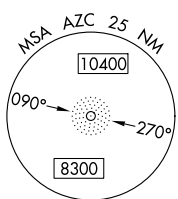
NA Circling NA for Cat D north of Rwy 11-29.
MISSED APPROACH: Climbing left turn to 7400 on heading 150° then climbing left turn to 8800 direct AZC NDB and hold, continue climb-in-hold to 8800.

AWOS-3PT 118.375	LOS ANGELES CENTER 124.2 343.6	UNICOM 122.7 (CTAF)
----------------------------	--	-------------------------------



SW-4, 16 JUL 2020 to 13 AUG 2020

SW-4, 16 JUL 2020 to 13 AUG 2020



CATEGORY	A	B	C	D
CIRCLING	6980-1¼ 2106 (2200-1¼)	6980-1½ 2106 (2200-1½)	6980-3	2106 (2200-3)

REIL Rwy 11
 REIL Rwy 29
 MIRL Rwy 11-29
 MIRL Rwy 2-20