

WAAS CH <b>86440</b> <b>W11A</b>	APP CRS <b>109°</b>	Rwy Idg TDZE Apt Elev	<b>6300</b> <b>4854</b> <b>4874</b>
--	------------------------	-----------------------------	---

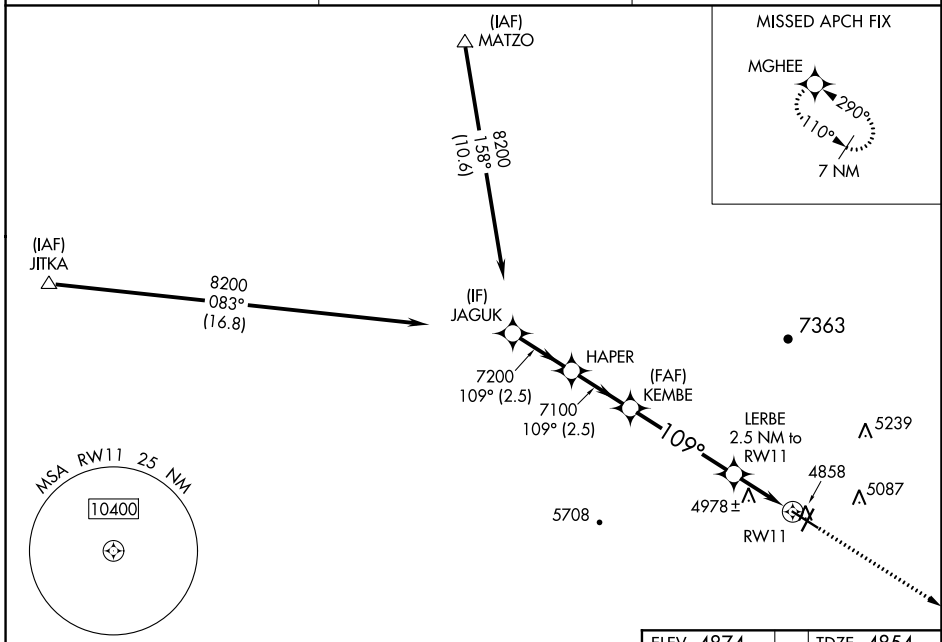
# RNAV (GPS) RWY 11

COLORADO CITY MUNI (AZC)

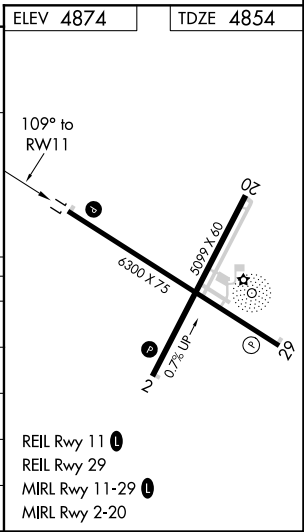
**⚠** For uncompensated Baro-VNAV systems, LNAV/VNAV NA below -24°C (-11°F) or above 51°C (125°F). Circling NA for Cat D north of Rwy 11-29. DME/DME RNP-0.3 NA.

MISSED APPROACH: Climb to 9100 direct MGHEE and hold, continue climb-in-hold to 9100.  
#Missed approach requires minimum climb of 240 feet per NM to 7500.

AWOS-3PT <b>118.375</b>	LOS ANGELES CENTER <b>124.2 343.6</b>	UNICOM <b>122.7 (CTAF) 0</b>
----------------------------	--	---------------------------------



JAGUK		HAPER		KEMBE		LERBE		MGHEE	
8200		7200		7100		5680		9100	
GP 3.00° TCH 53		7100		*5680		*1.9 NM to RWY 11		*LNAV only	
2.5 NM		2.5 NM		4.4 NM		0.6 NM		1.9 NM	
CATEGORY	A	B		C		D			
LPV DA#		5104-1 250 (300-1)							
LPV DA		5297-1½ 443 (500-1½)							
LNAV/VNAV DA		5463-2½ 609 (600-2½)							
LNAV MDA	5500-1	646 (700-1)		5500-1⅞		646 (700-1⅞)			
<b>C</b> CIRCLING	5500-1 626 (700-1)	5520-1 646 (700-1)		6880-3		2006 (2100-3)			



- REIL Rwy 11 0
- REIL Rwy 29
- MIRL Rwy 11-29 0
- MIRL Rwy 2-20

SW-4, 16 JUL 2020 to 13 AUG 2020

SW-4, 16 JUL 2020 to 13 AUG 2020