

WAAS CH 72740 W29A	APP CRS 290°	Rwy Idg TDZE Apt Elev	6300 4855 4874
---------------------------------	------------------------	-----------------------------	---

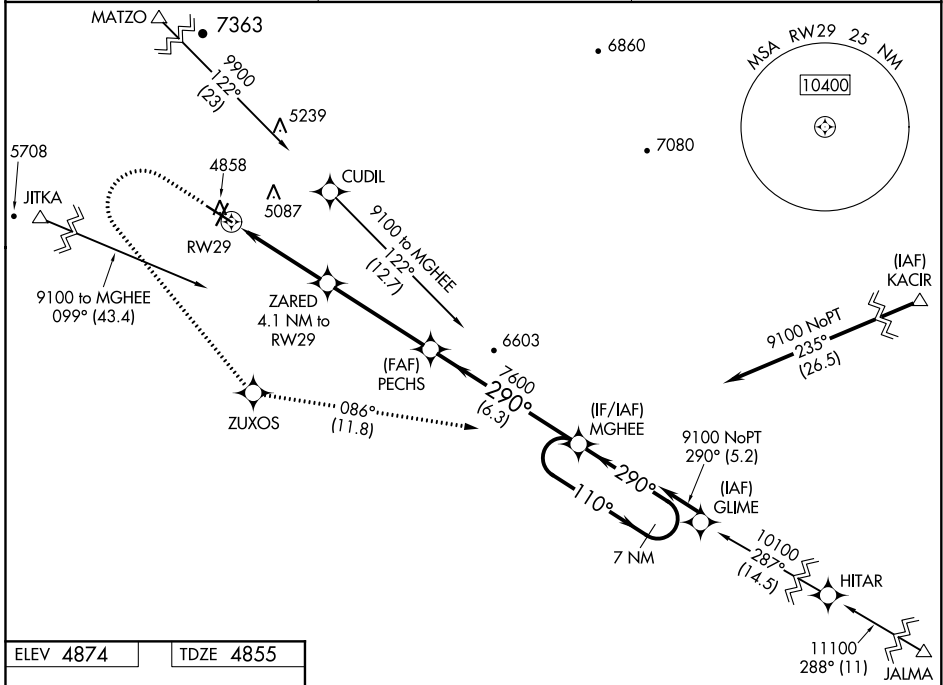
RNAV (GPS) RWY 29

COLORADO CITY MUNI (AZC)

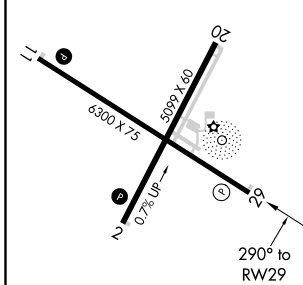
RNP APCH. MISSED APPROACH: Climb to 6600 then climbing left turn to 9100 direct ZUXOS and track 086° to MGHEE and hold.

Baro-VNAV NA. Circling NA for Cat D north of Rwy 11-29.

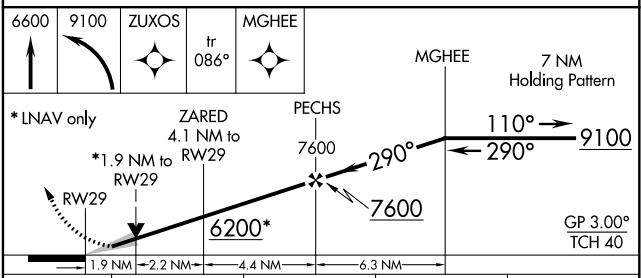
AWOS-3PT 118.375	LOS ANGELES CENTER 124.2 343.6	UNICOM 122.7 (CTAF)
----------------------------	--	-------------------------------



ELEV 4874	TDZE 4855
-----------	-----------



- REIL Rwy 11
- REIL Rwy 29
- MIRL Rwy 11-29
- MIRL Rwy 2-20



CATEGORY	A	B	C	D
LPV DA		5105-1	250 (300-1)	
LNAV/VNAV DA		5157-1	302 (300-1)	
LNAV MDA	5500-1	645 (700-1)	5500-1 $\frac{7}{8}$	645 (700-1 $\frac{7}{8}$)
<input checked="" type="checkbox"/> CIRCLING	5500-1 626 (700-1)	5520-1 646 (700-1)	6880-3	2006 (2100-3)

SW-4, 16 JUL 2020 to 13 AUG 2020

SW-4, 16 JUL 2020 to 13 AUG 2020