

| | | | |
|--|------------------------|-----------------------------|---------------------------------------|
| WAAS CH 49008 W05A | APP CRS 045° | Rwy Idg TDZE Apt Elev | 5500 18 18 |
|--|------------------------|-----------------------------|---------------------------------------|

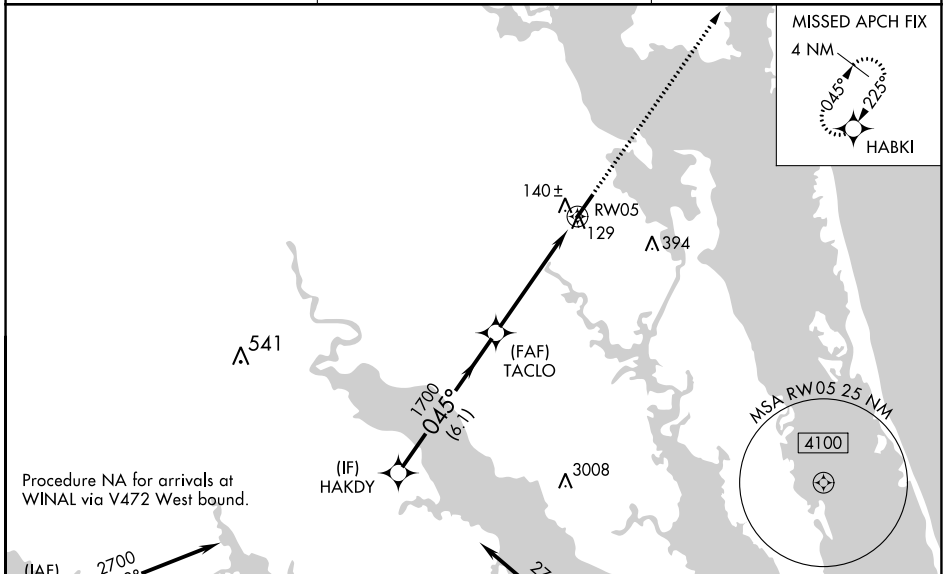
RNAV (GPS) RWY 5

CURRITUCK COUNTY RGNL (ONX)

⚠ Baro-VNAV NA when using Oceana NAS/Apollo Soucek altimeter setting. For uncompensated Baro-VNAV systems, LNAV/VNAV NA below -15°C (5°F) or above 49°C (120°F). DME/DME RNP-0.3 NA. Visibility reduction by helicopters NA. Procedure NA when tethered balloon located approximately 11.4 NM southwest of airport is flying. When local altimeter setting not received, use Oceana NAS/Apollo Soucek altimeter setting and increase all DA 59 feet, and all MDA 60 feet; increase LNAV Cat. C and D visibility ¼ mile.

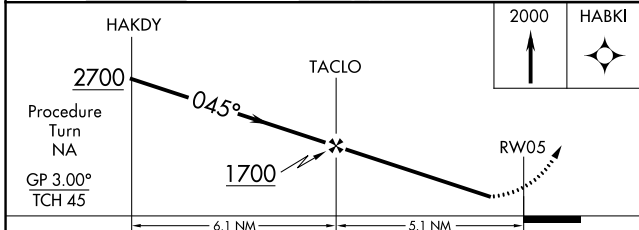
MISSED APPROACH:
Climb to 2000 direct HABKI and hold.

| | | |
|--------------------------|--------------------------------------|-----------------------|
| AWOS-3 119.775 | OCEANA APP CON 123.9 266.8 | CTAF 122.90 |
|--------------------------|--------------------------------------|-----------------------|

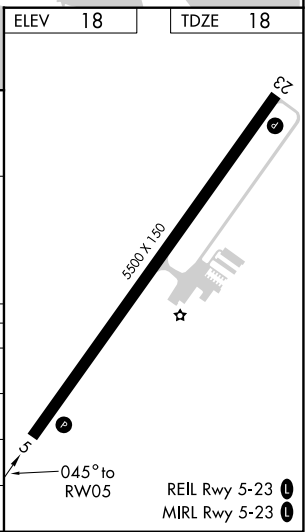


Procedure NA for arrivals at WINAL via V472 West bound.

Procedure NA for arrivals at OCSIP via V266 Southeast bound.



| CATEGORY | A | B | C | D |
|--------------|----------------------|----------------------|------------------------|------------------------|
| LPV DA | | 343-1¼ | 325 (400-1¼) | |
| LNAV/VNAV DA | | 410-1½ | 392 (400-1½) | |
| LNAV MDA | 400-1 | 382 (400-1) | | 400-1¼ 382 (400-1¼) |
| CIRCLING | 440-1 422 (500-1) | 480-1 462 (500-1) | 480-1½ 462 (500-1½) | 580-2 562 (600-2) |



SE-2, 16 JUL 2020 to 13 AUG 2020

SE-2, 16 JUL 2020 to 13 AUG 2020