

APP CRS 285°	Rwy Idg TDZE Apt Elev	N/A N/A 55
------------------------	-----------------------------	---------------------------------------

RNAV (GPS)-A

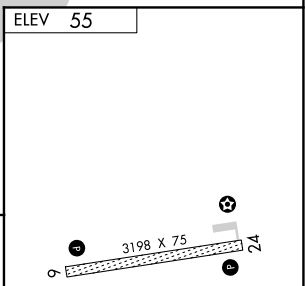
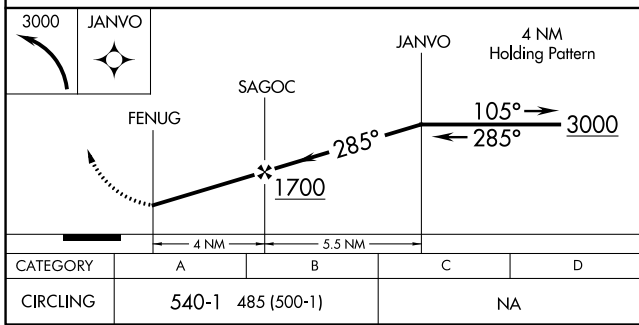
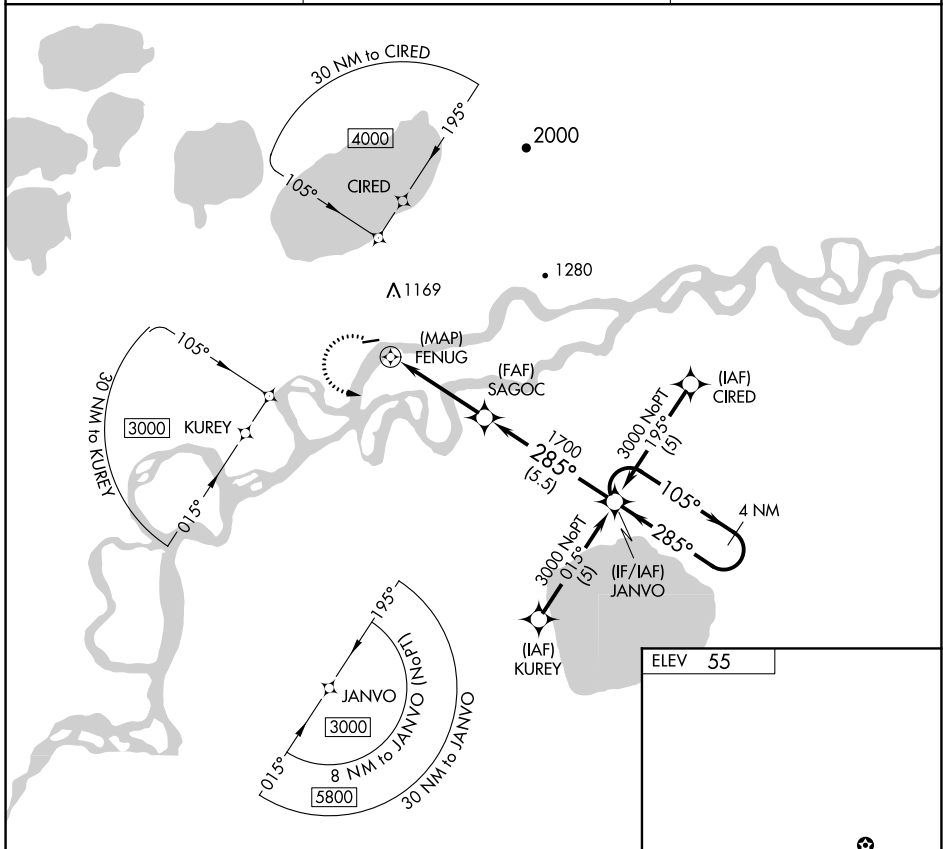
KALSAG (KLG)(PALG)

⚠ Circling NA northwest of Rwy 6-24. DME/DME RNP-0.3 NA. If local altimeter setting not received, use Aniak altimeter setting and increase all MDAs 60 feet.

⚠ MISSED APPROACH: Climbing left turn to 3000 direct JANVO and hold.

❄ -42°C

AWOS-3P 119.025	ANCHORAGE CENTER 118.15 251.05	UNICOM 122.8 (CTAF) ①
---------------------------	--	--



CATEGORY	A	B	C	D
CIRCLING	540-1	485 (500-1)	NA	

MIRL Rwy 6-24 **①**

AK, 16 JUL 2020 to 10 SEP 2020

AK, 16 JUL 2020 to 10 SEP 2020