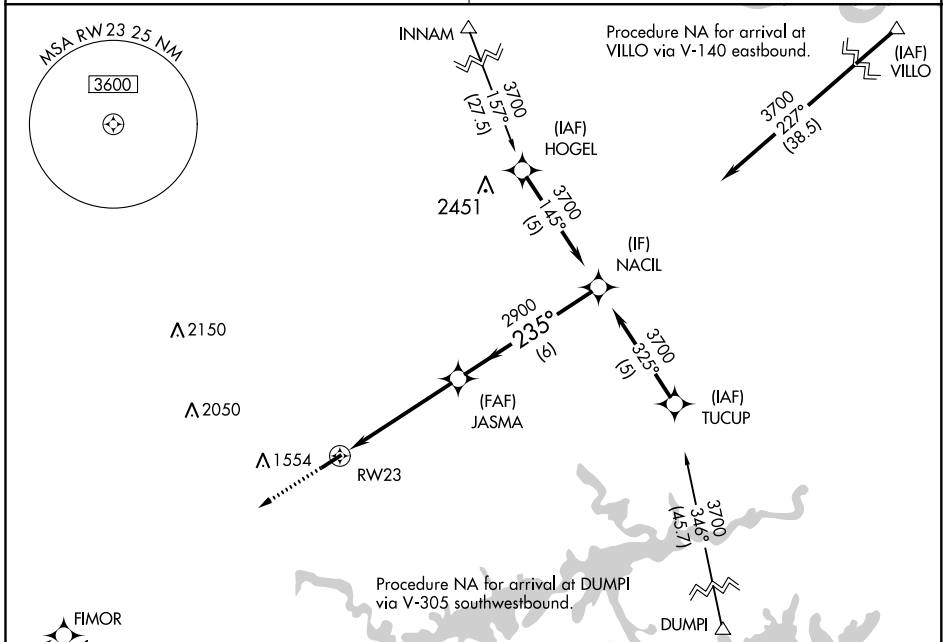


APP CRS <b>235°</b>	Rwy Idg <b>4795</b>
	TDZE <b>1268</b>
	Apt Elev <b>1268</b>

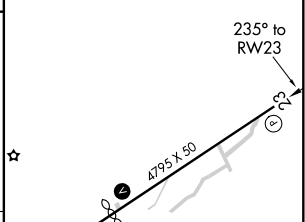
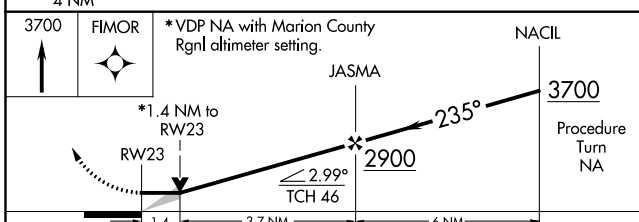
# RNAV (GPS) RWY 23

## HOLLEY MOUNTAIN AIRPARK (2A2)

RNP APCH.		MISSED APPROACH: Climb to 3700 direct FIMOR and hold.
▼	Obtain local altimeter setting on CTAF; when not received, use Marion County	
▲	Rgnl altimeter setting. Circling Rwy 5 NA at night.	
MEMPHIS CENTER <b>126.85 281.55</b>		UNICOM <b>122.7 (CTAF) 0</b>



ELEV 1268	TDZE 1268
-----------	-----------



CATEGORY	A	B	C	D
LNVA MDA	1740-1	472 (500-1)	1740-1¼ 472 (500-1¼)	NA
CIRCLING	1760-1	492 (500-1)	1800-1½ 532 (600-1½)	NA
MARION COUNTY RGNL ALTIMETER SETTING MINIMUMS				
LNVA MDA	1900-1	632 (700-1)	1900-1¾ 632 (700-1¾)	NA
CIRCLING	1940-1	672 (700-1)	1960-2 712 (800-2)	NA

MIRL Rwy 5-23 0
REIL Rwy 5 and 23 0

SC-1, 16 JUL 2020 to 13 AUG 2020

SC-1, 16 JUL 2020 to 13 AUG 2020