

APP CRS	Rwy Idg	<b>4397</b>
<b>055°</b>	TDZE	<b>1268</b>
	Apt Elev	<b>1268</b>

# RNAV (GPS) RWY 5

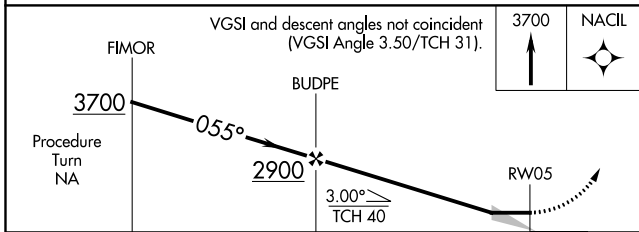
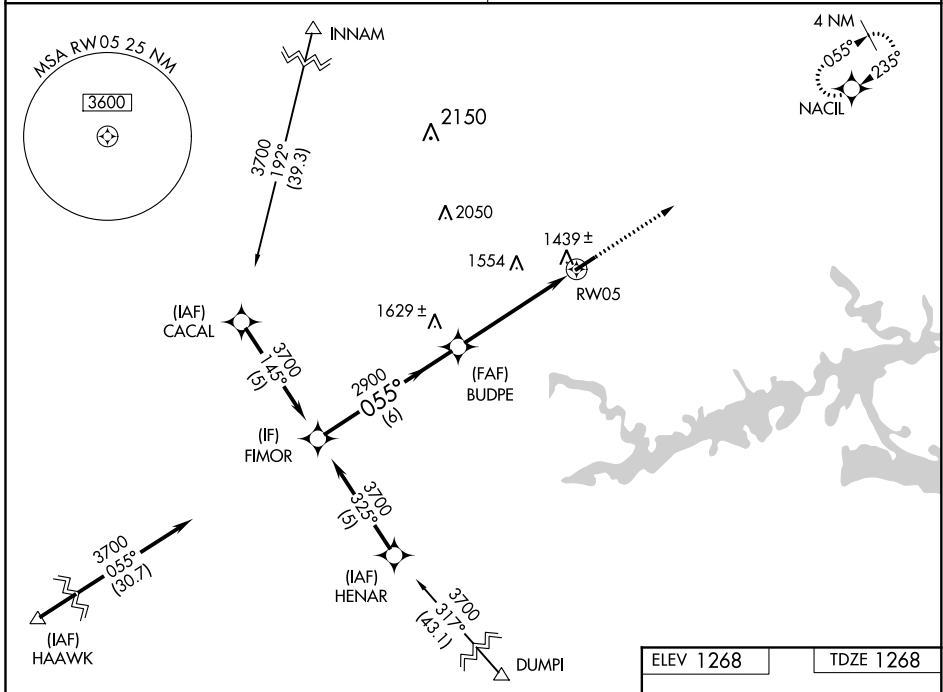
HOLLEY MOUNTAIN AIRPARK (2A2)

RNP APCH.

▼ Obtain local altimeter setting on CTAF; when not received, use Marion County Rgnl altimeter setting. Straight-in Rwy 5 NA at night, Circling Rwy 5 NA at night. Rwy 5 helicopter visibility reduction below 1 SM NA.

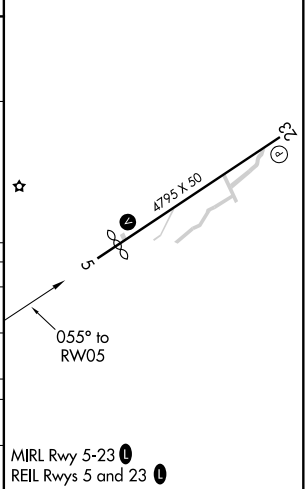
▲ NA MISSED APPROACH: Climb to 3700 direct NACIL and hold.

MEMPHIS CENTER <b>126.85 281.55</b>	UNICOM <b>122.7 (CTAF) 0</b>
--	---------------------------------



ELEV 1268	TDZE 1268
-----------	-----------

CATEGORY	A	B	C	D
LNAV MDA	1760-1	492 (500-1)	1760-1¼ 492 (500-1¼)	NA
CIRCLING	1760-1	492 (500-1)	1780-1½ 512 (600-1½)	NA
MARION COUNTY RGNL ALTIMETER SETTING MINIMUMS				
LNAV MDA	1920-1	652 (700-1)	1920-1¾ 652 (700-1¾)	NA
CIRCLING	1940-1	672 (700-1)	1960-2 692 (700-2)	NA



SC-1, 16 JUL 2020 to 13 AUG 2020

SC-1, 16 JUL 2020 to 13 AUG 2020