

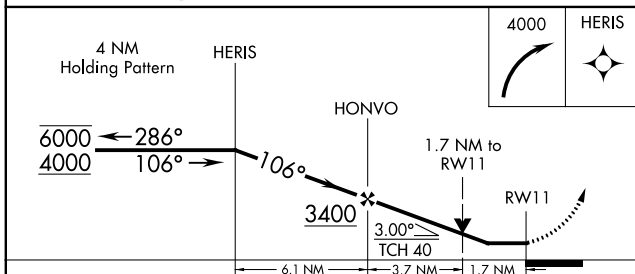
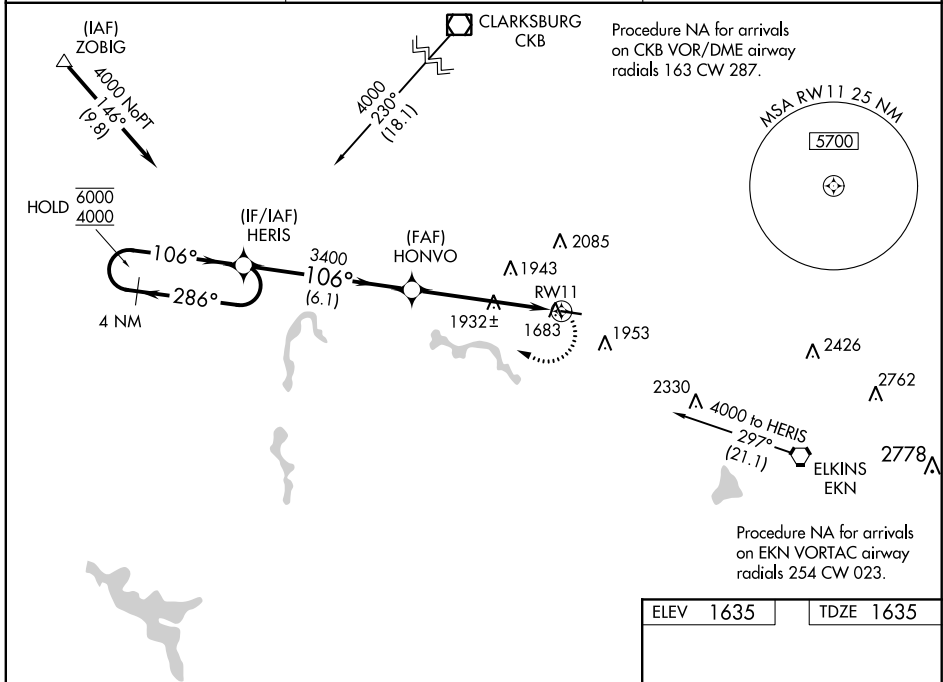
WAAS CH 72724 W11A	APP CRS 106°	Rwy Idg TDZE Apt Elev	4201 1635 1635
--	------------------------	-----------------------------	---

RNAV (GPS) RWY 11

UPSHUR COUNTY RGNL (W22)

RNP APCH. ▼ Rwy 11 helicopter visibility reduction below 3/4 SM NA.	MISSED APPROACH: Climbing right turn to 4000 direct HERIS and hold.
---	---

AWOS-3 119.975	CLARKSBURG APP CON* 121.15 284.65	UNICOM 122.8 (CTAF) 0
--------------------------	---	---------------------------------



ELEV 1635	TDZE 1635
MIRL Rwy 11-29 0	REIL Rwy 29 0

CATEGORY	A	B	C	D
LP MDA	2200-1	565 (600-1)	2200-1 5/8 565 (600-1 5/8)	NA
LNNAV MDA	2240-1	605 (700-1)	2240-1 3/4 605 (700-1 3/4)	NA
CIRCLING	2240-1	605 (700-1)	2260-1 3/4 625 (700-1 3/4)	NA

NE-4, 16 JUL 2020 to 13 AUG 2020

NE-4, 16 JUL 2020 to 13 AUG 2020