

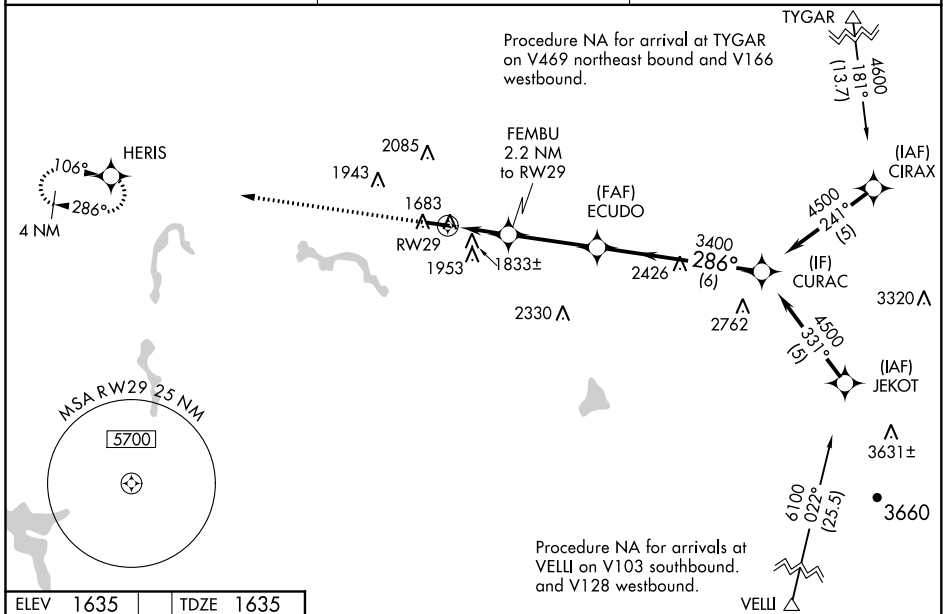
WAAS CH 56624 W29A	APP CRS 286°	Rwy ldg TDZE Apt Elev	4201 1635 1635
--	------------------------	-----------------------------	---

RNAV (GPS) RWY 29

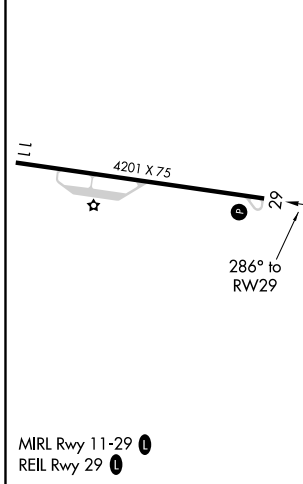
UPSHUR COUNTY RGNL (W22)

RNP APCH.	<p>For uncompensated Baro-VNAV systems, LNAV/VNAV NA below -18°C or above 54°C. Rwy 29 helicopter visibility reduction below 3/4 SM NA.</p>	MISSED APPROACH: Climb to 4000 direct HERIS and hold.
-----------	---	---

AWOS-3 119.975	CLARKSBURG APP CON * 121.15 284.65	UNICOM 122.8 (CTAF)
--------------------------	--	-------------------------------



ELEV 1635	TDZE 1635
-----------	-----------



4000 HERIS		VGSi and RNAV glidepath not coincident (VGSi Angle 3.00/TCH 27).		CURAC
*LNAV only.		FEMBU 2.2 NM to RW29	ECUDO 3400	4500
*1.4 NM to RW29		*2360		GP 3.00° TCH 40
-1.4 NM		-0.8 NM		3.2 NM
-1.4 NM		-0.8 NM		6 NM
CATEGORY	A	B	C	D
LPV DA	1885-1	250 (300-1)		NA
LNAV/VNAV DA	2125-1 3/4	490 (500-1 3/4)		NA
LNAV MDA	2100-1	465 (500-1)	2100-1 3/8 465 (500-1 3/8)	NA
CIRCLING	2240-1	605 (700-1)	2260-1 3/4 625 (700-1 3/4)	NA

NE-4, 16 JUL 2020 to 13 AUG 2020

NE-4, 16 JUL 2020 to 13 AUG 2020