

LOC/DME I-SUZ <b>111.95</b> Chan <b>56 (Y)</b>	APP CRS <b>019°</b>	Rwy Idg <b>5002</b> TDZE <b>390</b> Apt Elev <b>390</b>
--	------------------------	---

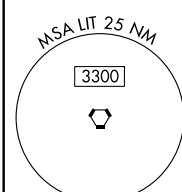
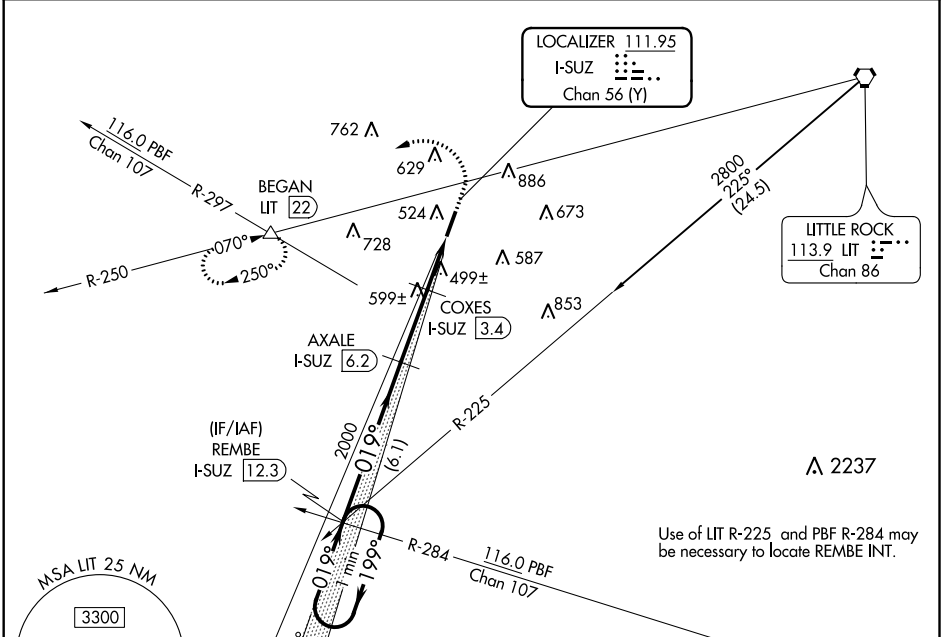
# ILS or LOC/DME RWY 2

SALINE COUNTY RGNL (SUZ)

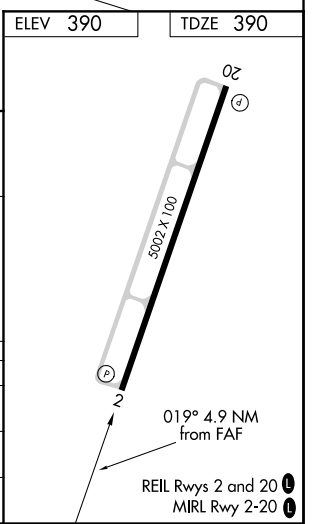
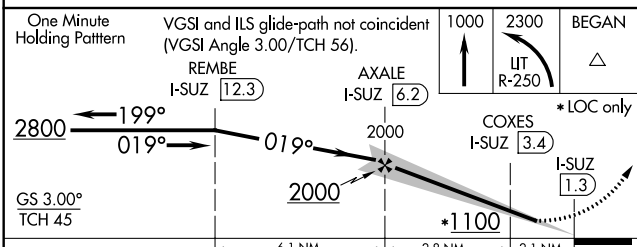
**NA** Visibility reduction by helicopters NA. Use Little Rock/Bill and Hillary Clinton National/Adams Field altimeter setting; when not received, use Hot Springs altimeter setting and increase all DA 41 feet and all MDA 60 feet. Increase S-ILS 2 all Cats visibility ¼ mile.

MISSED APPROACH: Climb to 1000 then climbing left turn to 2300 via LIT VORTAC R-250 to BEGAN INT/LIT 22 DME and hold.

AWOS-3 <b>132.125</b>	LITTLE ROCK APP CON <b>119.5 306.2</b>	UNICOM <b>122.8 (CTAF) 0</b>
--------------------------	---	---------------------------------



Use of LIT R-225 and PBF R-284 may be necessary to locate REMBE INT.



CATEGORY	A	B	C	D
S-ILS 2	693-1 303 (400-1)			
S-LOC 2	820-1	430 (500-1)	820-1½ 430 (500-1½)	820-1½ 430 (500-1½)
CIRCLING	1040-1 650 (700-1)	1140-1¼ 750 (800-1¼)	1140-2¼ 750 (800-2¼)	1140-2½ 750 (800-2½)

SC-1, 16 JUL 2020 to 13 AUG 2020

SC-1, 16 JUL 2020 to 13 AUG 2020