

WAAS CH 58209 W02A	APP CRS 019°	Rwy Idg TDZE 390 Apt Elev 390	5002
--	------------------------	---	-------------

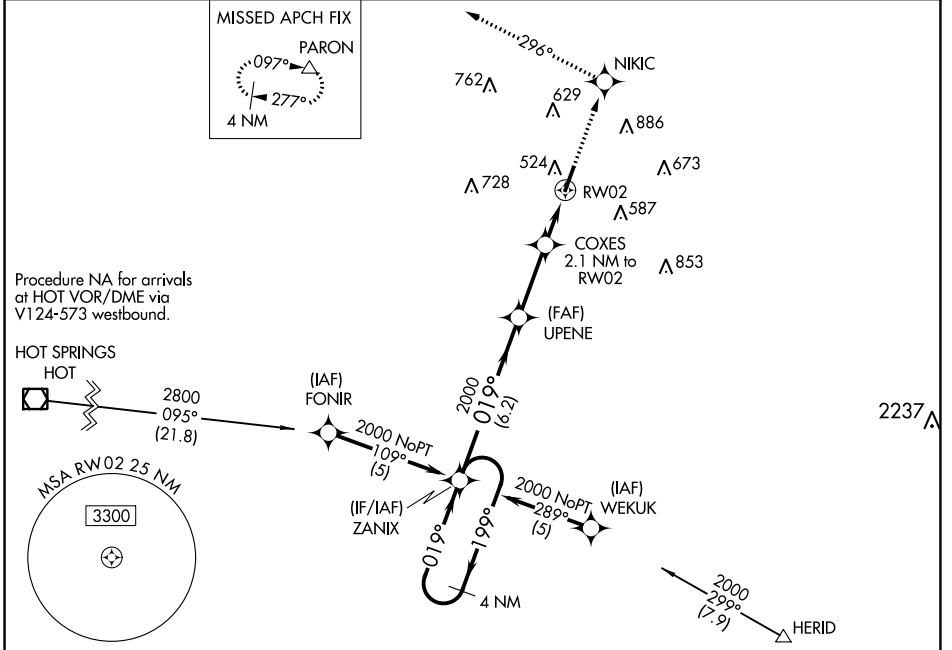
RNAV (GPS) RWY 2

SALINE COUNTY RGNL (SUZ)

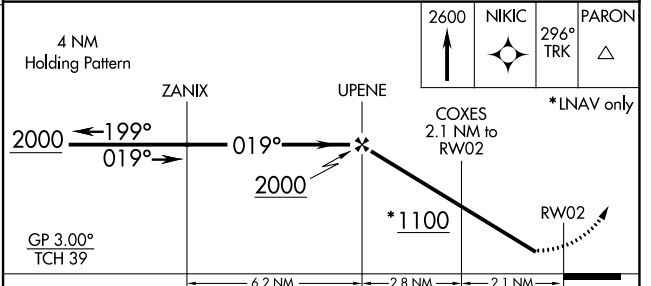
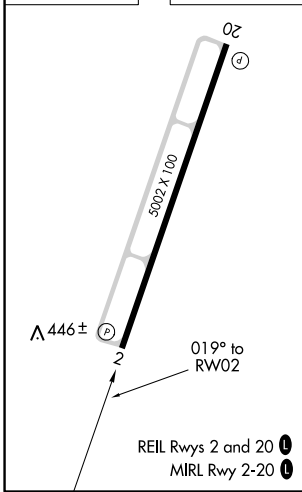
NA Baro-VNAV NA. DME/DME RNP-0.3 NA. Visibility reduction by helicopters NA. Use Little Rock/Bill and Hillary Clinton National/Adams Field altimeter setting; when not received, use Hot Springs altimeter setting and increase all DA 41 feet and all MDA 60 feet. Increase LPV and LNAV/VNAV visibility all Cats ¼ mile and LNAV visibility Cat D ¼ mile.

MISSED APPROACH: Climb to 2600 direct NIKIC and via 296° track to PARON and hold.

AWOS-3 132.125	LITTLE ROCK APP CON 119.5 306.2	UNICOM 122.8 (CTAF) 0
--------------------------	---	---------------------------------



ELEV 390	TDZE 390
----------	----------



CATEGORY	A	B	C	D
LPV DA		735-1¼	345 (400-1¼)	
LNAV/VNAV DA		769-1¼	379 (400-1¼)	
LNAV MDA	900-1	510 (600-1)	900-1½	510 (600-1½)
CIRCLING	1000-1 610 (700-1)	1140-1¼ 750 (800-1¼)	1140-2¼ 750 (800-2¼)	1140-2½ 750 (800-2½)

SC-1, 16 JUL 2020 to 13 AUG 2020

SC-1, 16 JUL 2020 to 13 AUG 2020