

WAAS CH <b>86334</b> W03A	APP CRS <b>033°</b>	Rwy Idg <b>5001</b> TDZE <b>3684</b> Apt Elev <b>3705</b>
---------------------------------	------------------------	---

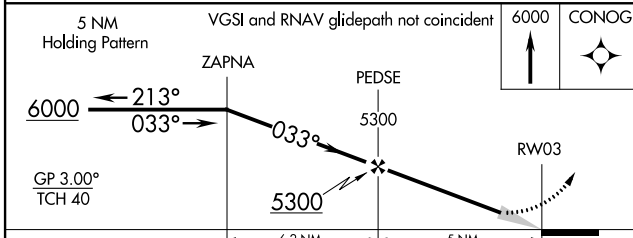
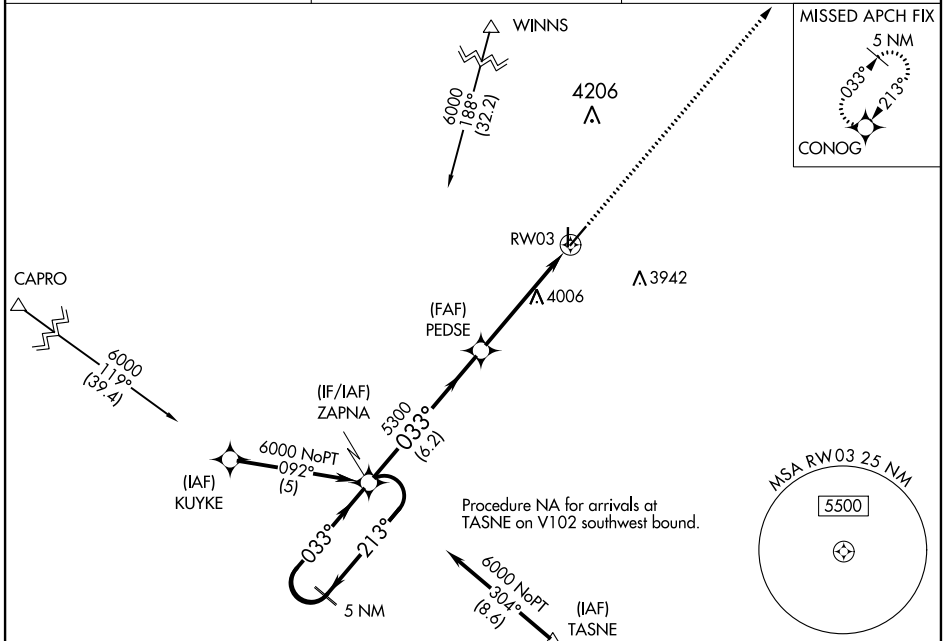
# RNAV (GPS) RWY 3

YOAKUM COUNTY (F98)

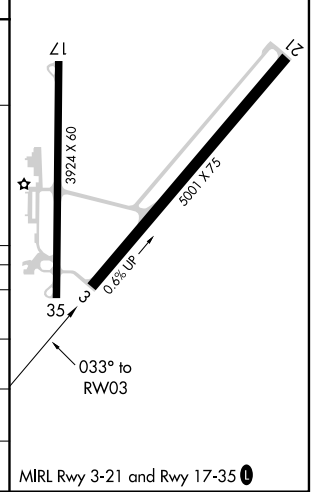
**Baro-VNAV NA. DME/DME RNP-0.3 NA. Use Hobbs altimeter setting, when not received, use Seminole altimeter setting and increase all DA 41 feet and all MDA 60 feet, increase LPV Cals A/B visibility to 1½ mile, LNAV/VNAV Cal A/B to 1½ mile, LNAV and Circling Cal B to 1¼ mile.**

**MISSED APPROACH:** Climb to 6000 direct CONOG and hold.

HOB AWOS-3 <b>119.75</b>	FORT WORTH CENTER <b>132.6 269.05</b>	CTAF <b>122.9</b>
-----------------------------	--	----------------------



ELEV 3705	TDZE 3684
-----------	-----------



CATEGORY	A	B	C	D
LPV DA	4026-1½	342 (400-1½)		NA
LNAV/VNAV DA	4073-1¾	389 (400-1¾)		NA
LNAV MDA	4400-1	716 (700-1)		NA
<b>C</b> CIRCLING	4400-1	695 (700-1)		NA

SC-2, 16 JUL 2020 to 13 AUG 2020

SC-2, 16 JUL 2020 to 13 AUG 2020