

WAAS CH <b>63036</b> W12A	APP CRS <b>123°</b>	Rwy Idg TDZE Apt Elev	<b>3402</b> <b>2677</b> <b>2677</b>
---------------------------------	------------------------	-----------------------------	---

# RNAV (GPS) RWY 12

CURTIS MUNI (47V)

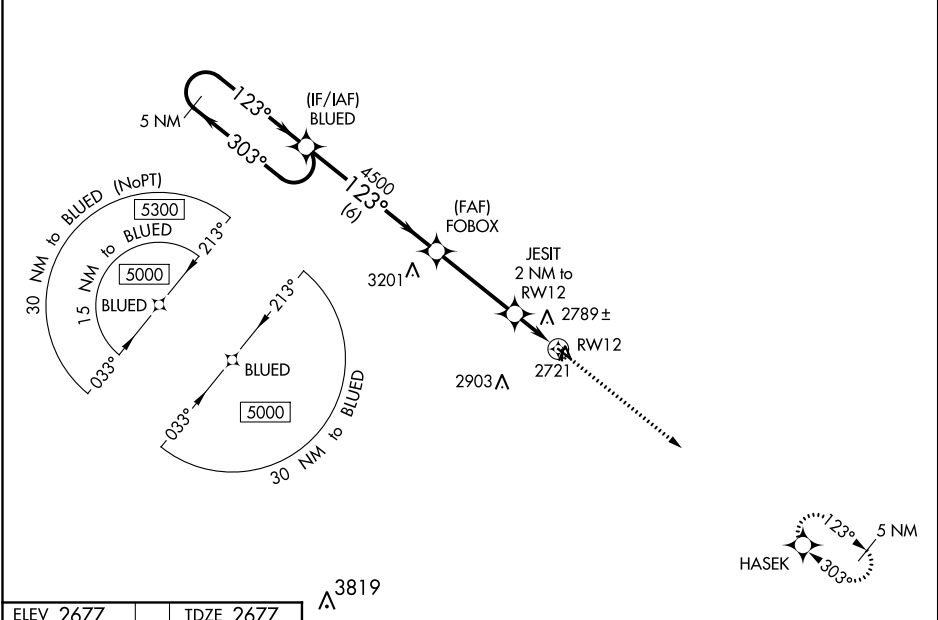
**Baro-VNAV NA.** Use Mc Cook altimeter setting; when not received, use North Platte altimeter setting and increase all DA 10 feet and all MDA 20 feet, and increase LNAV/VNAV Cat A and B visibility to 1 1/4 mile. DME/DME RNP-0.3 NA. Helicopter visibility reduction below 3/4 SM NA. Night landing: Rwy 17, 35 NA.

**MISSED APPROACH:** Climb to 5000 direct HASEK and hold.

MCK ASOS  
**119.025**

DENVER CENTER  
**132.7 226.675**

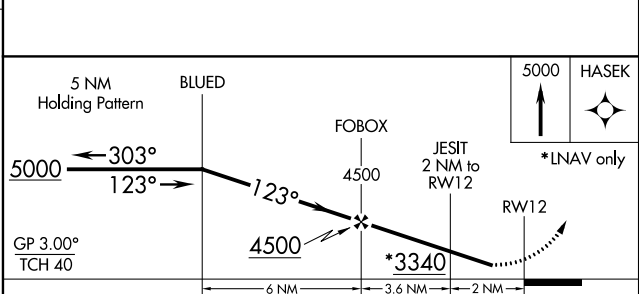
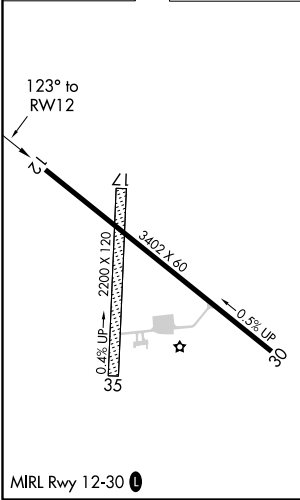
CTAF  
**122.9**



NC-2, 16 JUL 2020 to 13 AUG 2020

NC-2, 16 JUL 2020 to 13 AUG 2020

ELEV 2677	TDZE 2677
-----------	-----------



CATEGORY	A	B	C	D
LPV DA	3002-1 1/8	325 (400-1 1/8)		NA
LNAV/VNAV DA	3026-1 1/8	349 (400-1 1/8)		NA
LNAV MDA	3120-1	443 (500-1)		NA
<b>C</b> CIRCLING	3200-1 523 (600-1)	3380-1 703 (800-1)		NA