

# HI-TACAN RWY 14

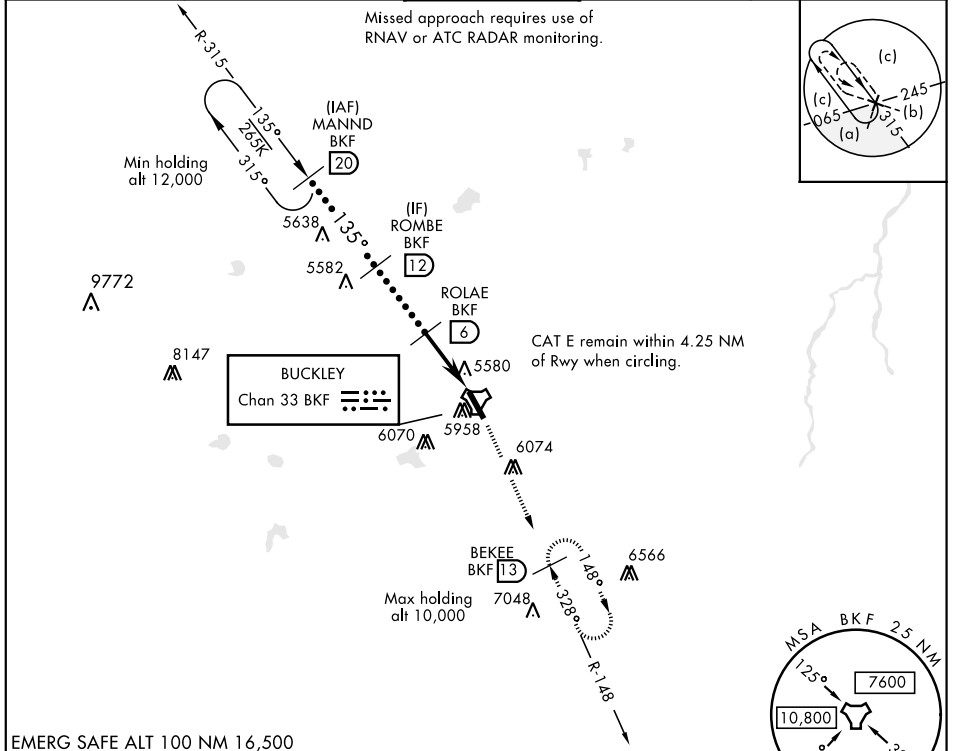
TACAN BKF Chan <b>33</b>	APCH CRS <b>135°</b>	Rwy Idg <b>11,006</b> TDZE <b>5592</b> Arprt Elev <b>5663</b>
-----------------------------	-------------------------	---

JAL-538 [USAF]

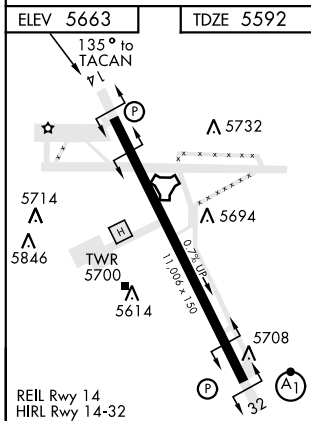
BUCKLEY AFB (KBKF)

**▼** \* Circling NA East of Rwy 14-32. MISSED APPROACH: Climb to 8200 on BKF TACAN R-148 to BEKEE and hold or as directed by ATC.

ATIS ★ <b>119.675 259.3</b>	DENVER APP CON <b>128.45 251.075</b>	BUCKLEY TOWER ★ <b>121.0 291.675</b>	GND CON <b>121.6 275.8</b>	CLNC DEL <b>121.6 275.8</b>
--------------------------------	---	---	-------------------------------	--------------------------------



EMERG SAFE ALT 100 NM 16,500



	MANND R-315 <b>20</b>	ROMBE <b>12</b>	ROLAE <b>6</b>	PENGE <b>1.8</b>	TACAN
	12,000	8500	7100		
	2.58° TCH 42			4.9 NM	.5 NM
CATEGORY	C	D	E		
S-14	5940-1 348 (300-1)				
CIRCLING*	6360-2 697 (700-2)	6400-2¼ 737 (800-2¼)	6420-2¾ 757 (800-2¾)		

# HI-TACAN RWY 14

SW-1, 13 AUG 2020 to 10 SEP 2020

SW-1, 13 AUG 2020 to 10 SEP 2020