

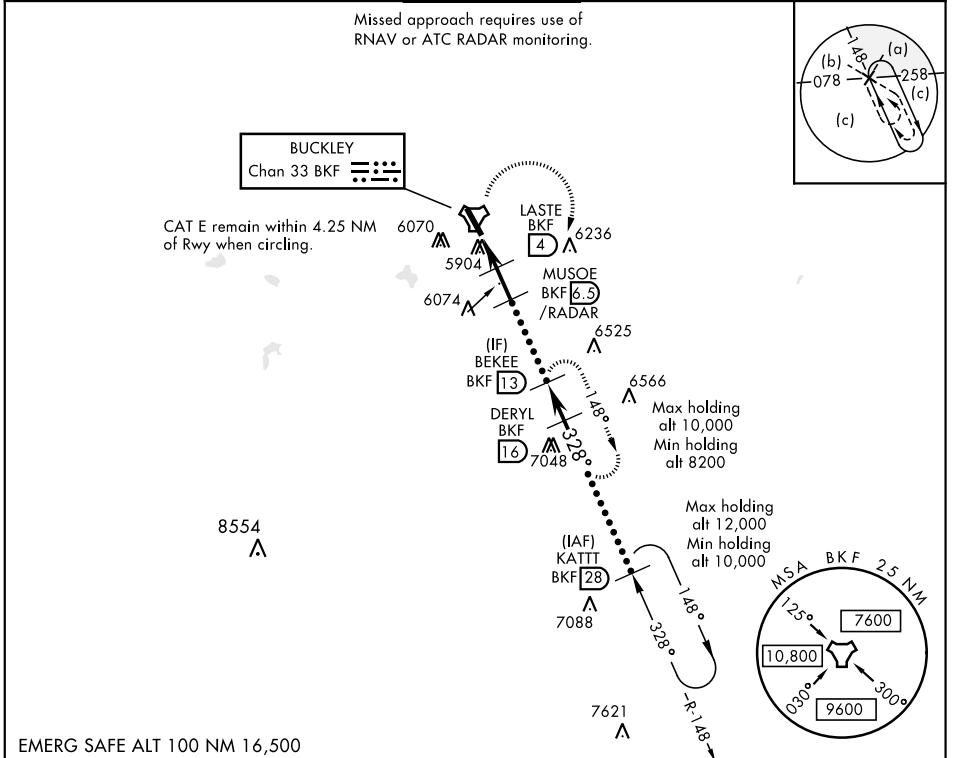
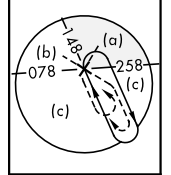
# HI-TACAN RWY 32

TACAN BKF Chan <b>33</b>	APCH CRS <b>328°</b>	Rwy ldg <b>11,006</b> TDZE <b>5663</b> Arprt Elev <b>5663</b>	JAL-538 [USAF]	BUCKLEY AFB (KBKF)
-----------------------------	-------------------------	---	----------------	--------------------

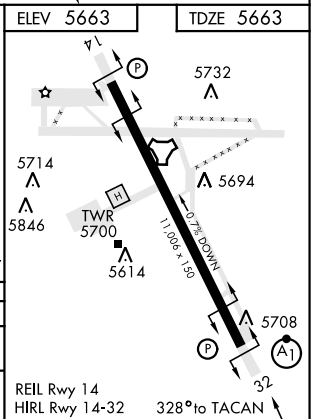
A1 ALSF-1  
 \* When ALS inop, increase CAT CDE vis to 1 3/4 miles.  
 \*\* Circling NA East of Rwy 14-32.  
 MISSED APPROACH: Climbing right turn to 8200 and intercept BKF TACAN R-148 direct BEKEE and hold or as directed by ATC.

ATIS * <b>119.675 259.3</b>	DENVER APP CON <b>128.45 251.075</b>	BUCKLEY TOWER * <b>121.0 291.675</b>	GND CON <b>121.6 275.8</b>	CLNC DEL <b>121.6 275.8</b>
--------------------------------	---	---	-------------------------------	--------------------------------

Missed approach requires use of RNAV or ATC RADAR monitoring.



8200 BKF R-148	BEKEE BKF 13			
TACAN	CENAR 1.7	LASTE 4	MUSOE 6.5 /RADAR	BEKEE 13
			DERYL 16	KATT 28
				10,000
				8100
				8000
				7400
				6600
				3.02°
				TCH 45
				5 NM
				2.3 NM
				2.5 NM
CATEGORY	C	D	E	
S-32 *	6280-1 3/8 617 (700-1 3/8)			
CIRCLING **	6360-2 697 (700-2)	6400-2 1/4 737 (800-2 1/4)	6420-2 3/4 757 (800-2 3/4)	



# HI-TACAN RWY 32



SW-1, 13 AUG 2020 to 10 SEP 2020

SW-1, 13 AUG 2020 to 10 SEP 2020