

# PIKES TWO DEPARTURE

AL-538 (FAA)

BUCKLEY AFB (BKF)  
AURORA, COLORADO

ATIS  
119.675 259.3  
CLNC DEL  
121.6 275.8  
DENVER DEP CON  
128.45 251.075

**TOP ALTITUDE:  
ASSIGNED BY ATC**

DENVER  
117.9 DEN  
Chan 126  
N39°48.75'-W104°39.64'

HUGO  
112.1 HGO  
Chan 58

FL230  
14300  
1970  
(44)  
(55)  
159  
0076\*  
0011  
0001

SOLAR  
N39°08.80'  
W105°03.55'

ADANE  
N38°54.95'  
W104°23.94'

TAKEOFF MINIMUMS  
All runways: Standard.

NOTE: RADAR required.

BLACK FOREST  
112.5 BRK  
Chan 72

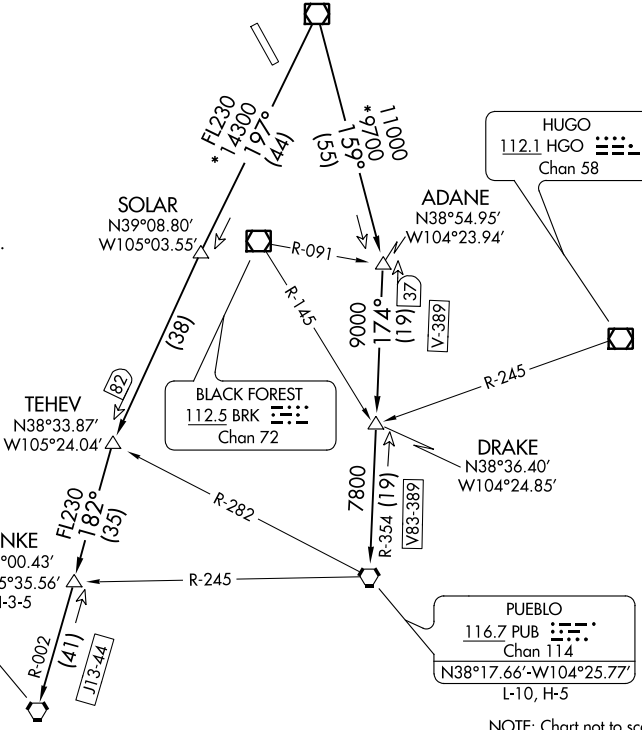
TEHEV  
N38°33.87'  
W105°24.04'

DRAKE  
N38°36.40'  
W104°24.85'

BINKE  
N38°00.43'  
W105°35.56'  
H-3-5

ALAMOSA  
113.9 ALS  
Chan 86  
N37°20.95'-W105°48.93'  
L-8-9, H-4-5

PUEBLO  
116.7 PUB  
Chan 114  
N38°17.66'-W104°25.77'  
L-10, H-5



SW-1, 13 AUG 2020 to 10 SEP 2020

SW-1, 13 AUG 2020 to 10 SEP 2020

## DEPARTURE ROUTE DESCRIPTION

TAKEOFF ALL RUNWAYS: Fly assigned heading and altitude for RADAR vectors to assigned route. Expect filed altitude 10 minutes after departure.

LOST COMMUNICATIONS: If no transmissions are received within one minute after departure, maintain assigned heading until 7000 feet, then climb to filed altitude via direct DEN VOR/DME, thence via assigned transition. If filed altitude is above 10000 feet, cross DEN VOR/DME at or above 11000 feet.

ALAMOSA TRANSITION (PIKES2.ALS): From over DEN VOR/DME on DEN R-197 to TEHEV, then on ALS R-002 to ALS VORTAC.

BINKE TRANSITION (PIKES2.BINKE): From over DEN VOR/DME on DEN R-197 to TEHEV, then on ALS R-002 to BINKE.

PUEBLO TRANSITION (PIKES2.PUB): From over DEN VOR/DME on DEN R-159 to ADANE, then on PUB R-354 to PUB VORTAC.

# PIKES TWO DEPARTURE