

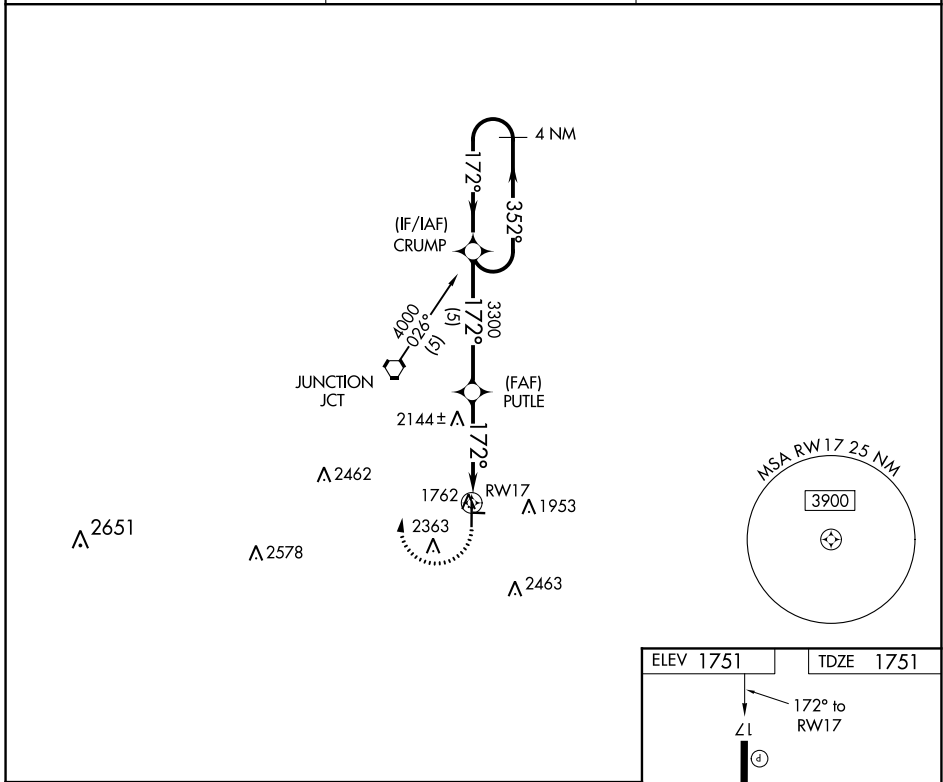
APP CRS 172°	Rwy Idg 5004
	TDZE 1751
	Apt Elev 1751

RNAV (GPS) RWY 17

KIMBLE COUNTY (JCT)

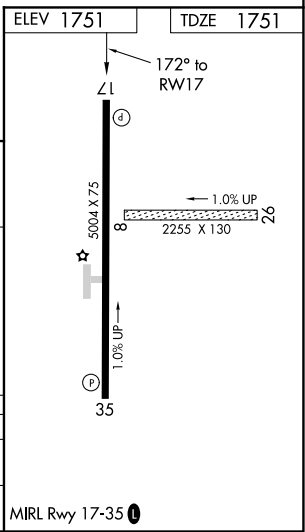
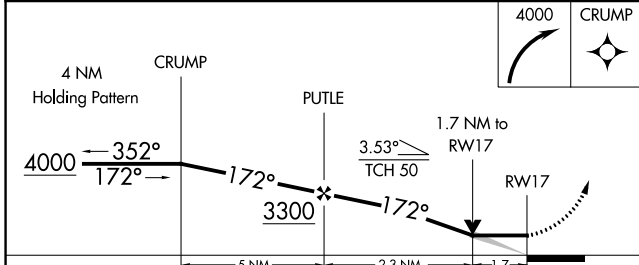
NA	Circling NA to Rwy 8-26. GPS or RNP-0.3 REQUIRED. DME/DME RNP-0.3 NA.	MISSED APPROACH: Climbing right turn to 4000 direct CRUMP WP and hold.
-----------	---	--

ASOS 119.275	HOUSTON CENTER 125.75 346.4	UNICOM 122.8 (CTAF) 1
------------------------	---------------------------------------	--



SC-3, 13 AUG 2020 to 10 SEP 2020

SC-3, 13 AUG 2020 to 10 SEP 2020



CATEGORY	A	B	C	D
LNVA MDA	2420-1	669 (700-1)	2420-1¾ 669 (700-1¾)	NA
CIRCLING	2420-1	669 (700-1)	2740-3 989 (1000-3)	NA