

WAAS CH <b>42933</b> W20A	APP CRS <b>198°</b>	Rwy Idg <b>4150</b> TDZE <b>874</b> Apt Elev <b>878</b>
---------------------------------	------------------------	---

# RNAV (GPS) RWY 20

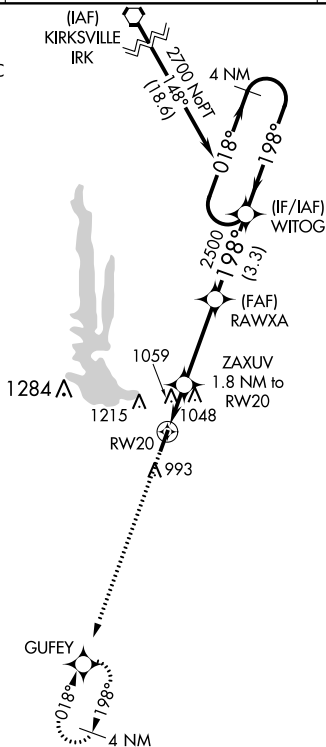
MACON-FOWER MEMORIAL (K89)

**NA** DME/DME RNP-0.3 NA. Use Moberly altimeter setting; when not received, use Columbia altimeter setting and increase all MDA 100 feet. Helicopter visibility reduction below 1 SM NA. Night landing: Rwy 20 NA.

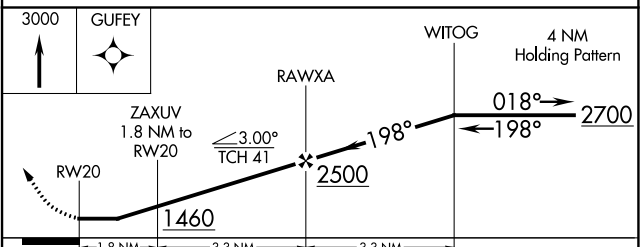
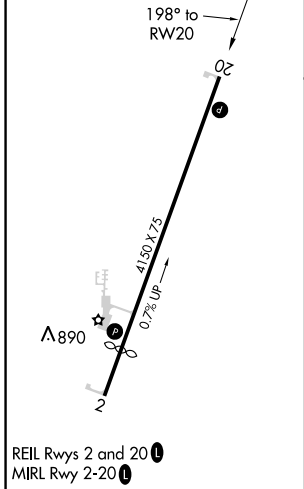
MISSED APPROACH: Climb to 3000 direct GUFY and hold.

MBY AWOS-3P <b>120.025</b>	KANSAS CITY CENTER <b>125.25 235.975</b>	UNICOM <b>122.8 (CTAF)</b>
-------------------------------	---	-------------------------------

Procedure NA for arrival on IRK VORTAC airway radials 059 CW 237.



ELEV 878	TDZE 874
----------	----------



CATEGORY	A	B	C	D
LP MDA	1340-1	466 (500-1)		NA
LNAV MDA	1360-1	486 (500-1)		NA
<b>C</b> CIRCLING	1400-1 522 (600-1)	1560-1 682 (700-1)		NA

NC-3, 13 AUG 2020 to 10 SEP 2020

NC-3, 13 AUG 2020 to 10 SEP 2020