

VOR/DME MCM	APP CRS	Rwy Idg	3554
112.9	008°	TDZE	876
Chan 76		Apt Elev	878

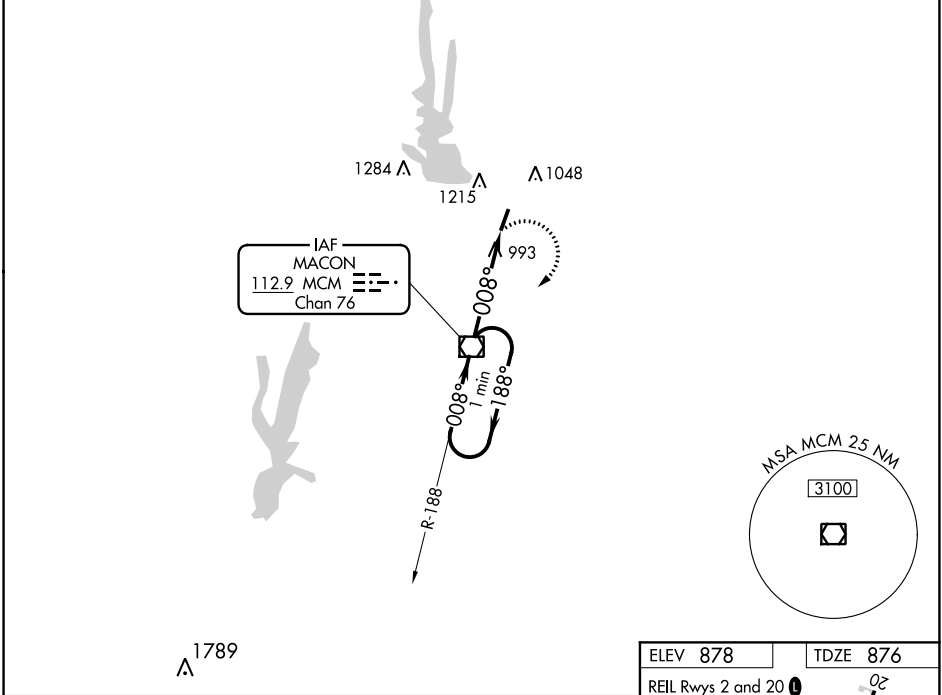
# VOR RWY 2

MACON-FOWER MEMORIAL (K89)

**▼** Night Landing: Rwy 20 NA. Helicopter visibility reduction below 3/4 SM NA. Use Moberly altimeter setting; when not received use Columbia altimeter setting.

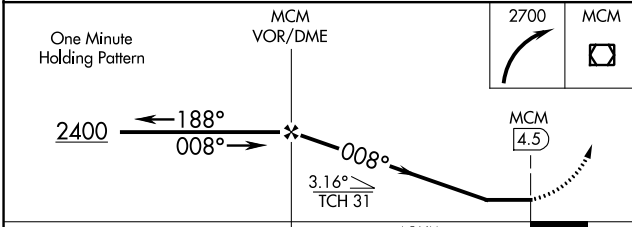
**▲ NA** MISSED APPROACH: Climbing right turn to 2700 direct MCM VOR/DME and hold.

MBY AWOS-3P <b>120.025</b>	KANSAS CITY CENTER <b>125.25 235.975</b>	UNICOM <b>122.8 (CTAF) 0</b>
-------------------------------	---	---------------------------------



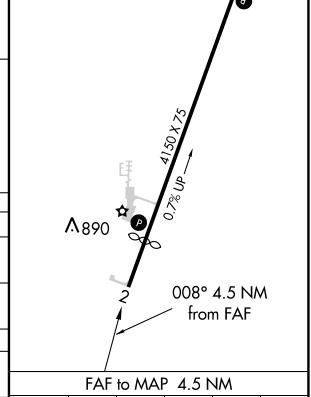
NC-3, 13 AUG 2020 to 10 SEP 2020

NC-3, 13 AUG 2020 to 10 SEP 2020



ELEV 878	TDZE 876
----------	----------

REIL Rwy 2 and 20  
MIRL Rwy 2-20



CATEGORY	A	B	C	D
S-2	1360-1	484 (500-1)		NA
<b>C</b> CIRCLING	1400-1 522 (600-1)	1560-1 682 (700-1)		NA
COLUMBIA ALTIMETER SETTING MINIMUMS				
S-2	1460-1	584 (600-1)		NA
<b>C</b> CIRCLING	1500-1 622 (700-1)	1660-1 782 (800-1)		NA

FAF to MAP 4.5 NM					
Knots	60	90	120	150	180
Min:Sec	4:30	3:00	2:15	1:48	1:30