

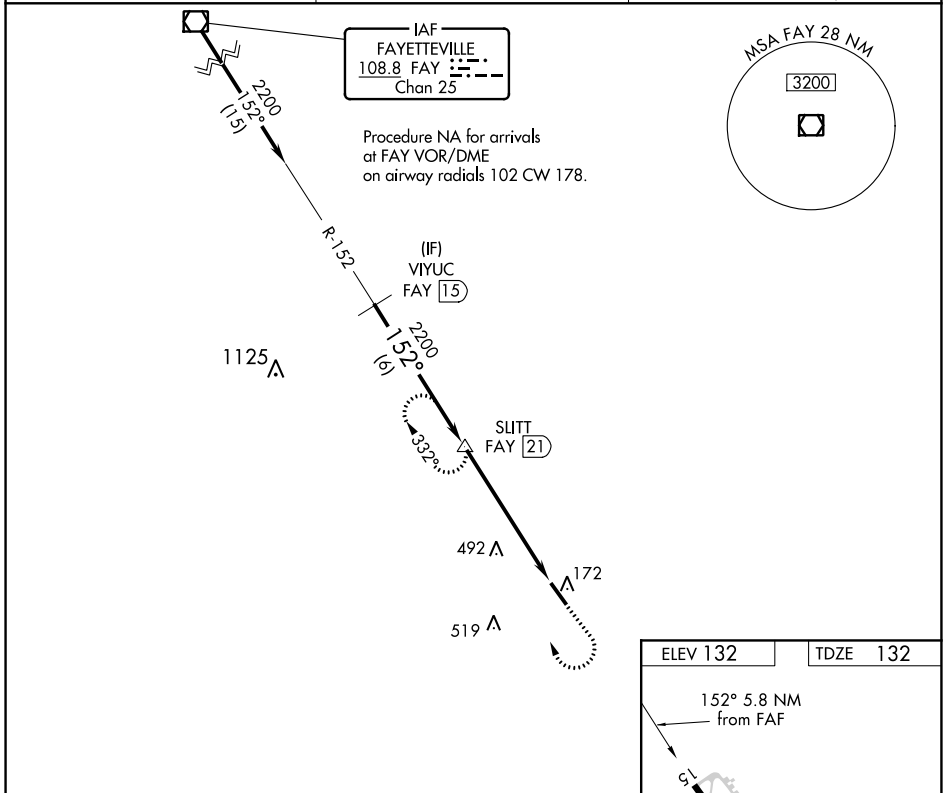
VOR/DME FAY	APP CRS	Rwy Idg	5006
108.8	152°	TDZE	132
Chan 25		Apt Elev	132

VOR/DME RWY 15
CURTIS L BROWN JR FIELD (EYF)

▼ Visibility reduction by helicopters NA. When local altimeter setting not received, use Fayetteville altimeter setting and increase all MDA 80 feet and increase S-15 visibility Cats C and D ¼ mile and increase Circling visibility Cat C ¼ mile and Cat D ½ mile.

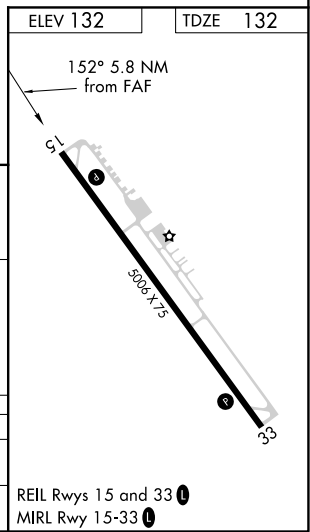
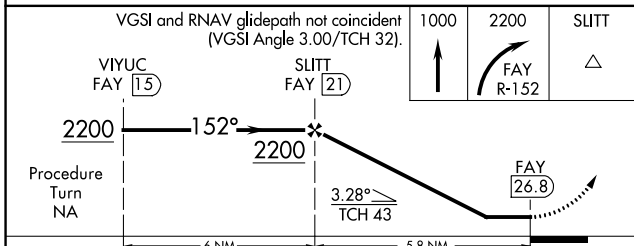
MISSED APPROACH: Climb to 1000 then climbing right turn to 2200 on FAY R-152 to SLITT/21 DME and hold.

AWOS-3P 119.475	FAYETTEVILLE APP CON 133.0 290.25	UNICOM 122.8 (CTAF)
---------------------------	---	-------------------------------



SE-2, 13 AUG 2020 to 10 SEP 2020

SE-2, 13 AUG 2020 to 10 SEP 2020



CATEGORY	A	B	C	D
S-15	760-1 628 (700-1)	760-1¼ 628 (700-1¼)	760-1¾ 628 (700-1¾)	760-2 628 (700-2)
CIRCLING	760-1 628 (700-1)	760-1¼ 628 (700-1¼)	760-1¾ 628 (700-1¾)	800-2 668 (700-2)