

WAAS CH 53540 W33A	APP CRS 341°	Rwy ldg 3500 TDZE 1511 Apt Elev 1511
--	------------------------	---

RNAV (GPS) RWY 33

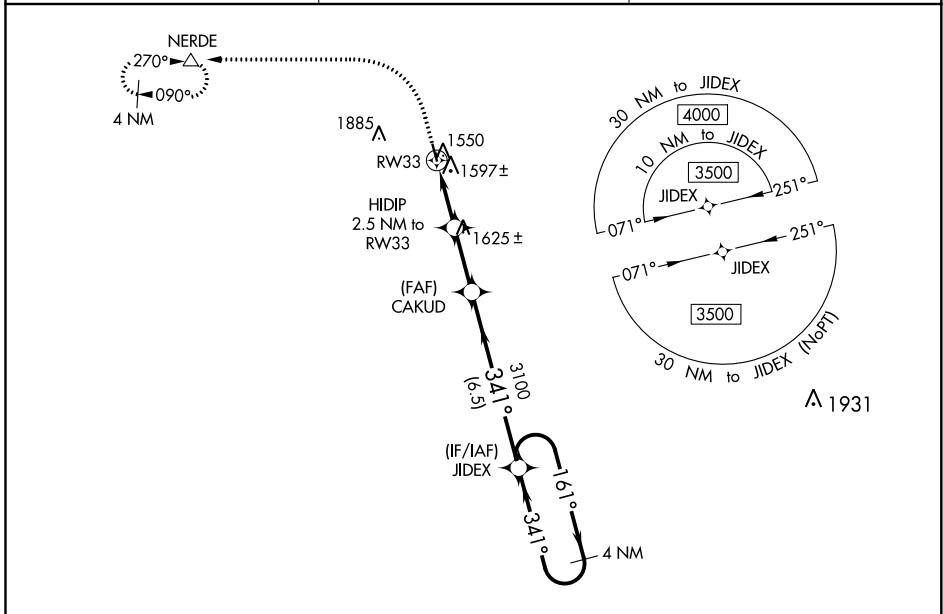
LAKOTA MUNI (5L~~0~~)

RNP APCH.

▼ Baro-VNAV NA. Rwy 33 helicopter visibility reduction below 3/4 SM NA.
▲ NA Circling Rwy 15 NA at night. Use Devils Lake altimeter setting.

MISSED APPROACH: Climb to 2300 then climbing left turn to 3300 direct NERDE and hold.

DVL AWOS-3PT 125.875	MINNEAPOLIS CENTER 132.15 269.6	UNICOM 122.8 (CTAF) 0
--------------------------------	---	---------------------------------



NC-1, 13 AUG 2020 to 10 SEP 2020

NC-1, 13 AUG 2020 to 10 SEP 2020

ELEV 1511	TDZE 1511	R-5403	
2300	3300	NERDE	VGSI and RNAV glidepath not coincident. (VGSI Angle 3.00/TCH 26).
*LNAV only.		HIDIP 2.5 NM to RW33	CAKUD 3100
RW33		JIDEX 3100	JIDEX 3500
2340*		2.5 NM	2.4 NM
		6.5 NM	4 NM Holding Pattern
		341°	161°
		3100	3500
		GP 3.00°	TCH 40
CATEGORY	A	B	C
LPV DA	1824-1 1/8	313 (400-1 1/8)	NA
LNAV/VNAV DA	1824-1 1/8	313 (400-1 1/8)	NA
LNAV MDA	1920-1	409 (500-1)	1920-1 1/8 409 (500-1 1/8)
C CIRCLING	2080-1 569 (600-1)	2200-1 689 (700-1)	2260-2 1/4 749 (800-2 1/4)