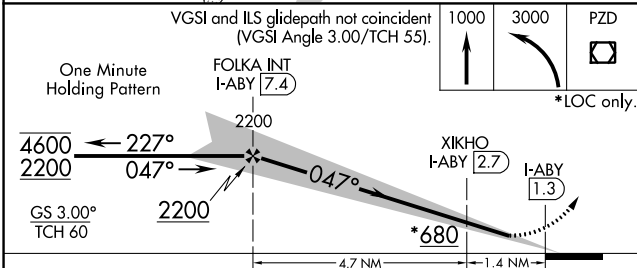
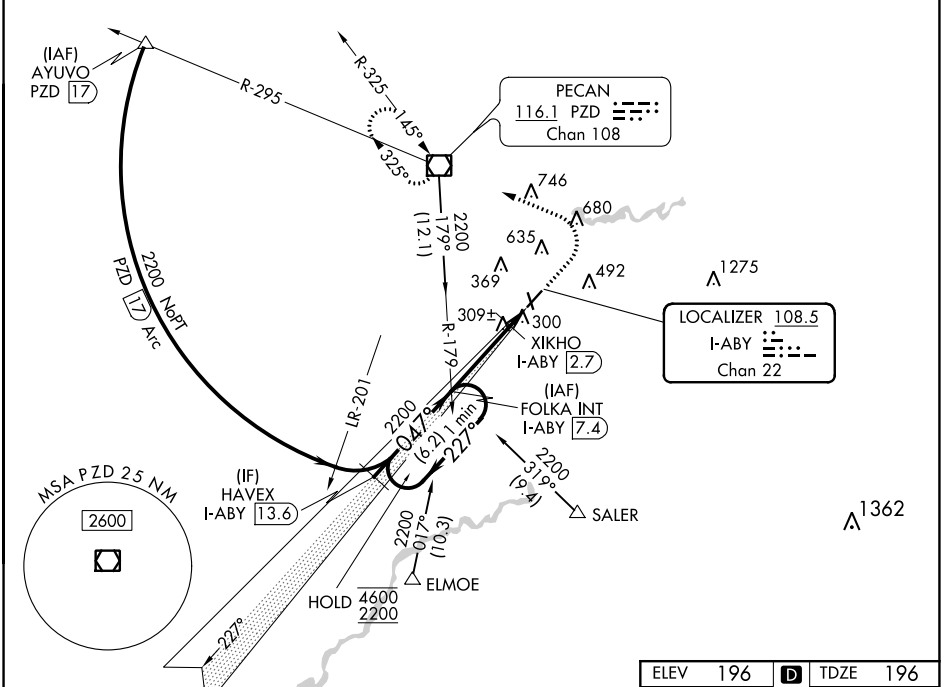


LOC/DME I-ABY 108.5 Chan 22	APP CRS 047°	Rwy Idg 6601 TDZE 196 Apt Elev 196
---	------------------------	---

I LS or LOC RWY 5

SOUTHWEST GEORGIA RGNL (ABY)

From ELMOE and SALER: RNAV-1 GPS required.		MALSR	MISSED APPROACH: Climb to 1000 then climbing left turn to 3000 direct PZD VOR/DME and hold.	
<p>⚠ For inop ALS, increase S-LOC 5 Cats C/D visibility to 1½ SM and XIKHO fix minimums S-LOC 5 Cats C/D visibility to RVR 5500.</p>				
ATIS 133.05	JACKSONVILLE CENTER 125.75 226.8	ALBANY TOWER * 120.25 (CTAF) 0336.4	GND CON 121.9 348.6	UNICOM 122.95



ELEV 196	TDZE 196
<p>One Minute Holding Pattern</p> <p>FOLKA INT I-ABY 7.4</p> <p>XIKHO I-ABY 2.7</p> <p>I-ABY 1.3</p> <p>*680'</p> <p>4.7 NM</p> <p>1.4 NM</p> <p>*LOC only.</p>	
<p>VGSI and ILS glidepath not coincident (VGSI Angle 3.00/TCH 55).</p>	
<p>GS 3.00° TCH 60</p>	
<p>2000</p> <p>2200</p> <p>4600</p> <p>227°</p> <p>047°</p>	

<p>TWR 263</p> <p>525 X 148</p> <p>660 X 188</p> <p>35</p> <p>047° 6.1 NM from FAF</p> <p>HIRL Rwy 5-23</p> <p>MIRL Rwy 17-35</p> <p>REIL Rws 17 and 23</p>						
<table border="1"> <tr> <th colspan="2">FAF to MAP 6.1 NM</th> </tr> <tr> <td>Knots</td> <td>60 90 120 150 180</td> </tr> <tr> <td>Min:Sec</td> <td>6:06 4:04 3:03 2:26 2:02</td> </tr> </table>	FAF to MAP 6.1 NM		Knots	60 90 120 150 180	Min:Sec	6:06 4:04 3:03 2:26 2:02
FAF to MAP 6.1 NM						
Knots	60 90 120 150 180					
Min:Sec	6:06 4:04 3:03 2:26 2:02					

CATEGORY	A	B	C	D
S-ILS 5		396/24	200 (200-½)	
S-LOC 5	680/24	484 (500-½)	680/50	484 (500-1)
CIRCLING	680-1	484 (500-1)	940-2¼ 744 (800-2¼)	940-2½ 744 (800-2½)
XIKHO FIX MINIMUMS (DME REQUIRED)				
S-LOC 5	560/24	364 (400-½)	560/35	364 (400-¾)
CIRCLING	640-1 444 (500-1)	660-1 464 (500-1)	940-2¼ 744 (800-2¼)	940-2½ 744 (800-2½)

SE-4, 10 SEP 2020 to 08 OCT 2020

SE-4, 10 SEP 2020 to 08 OCT 2020