

WAAS CH 97415 W35A	APP CRS 347°	Rwy Idg 5219 TDZE 196 Apt Elev 196
--	------------------------	---

RNAV (GPS) RWY 35

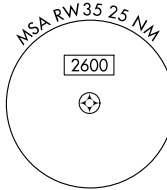
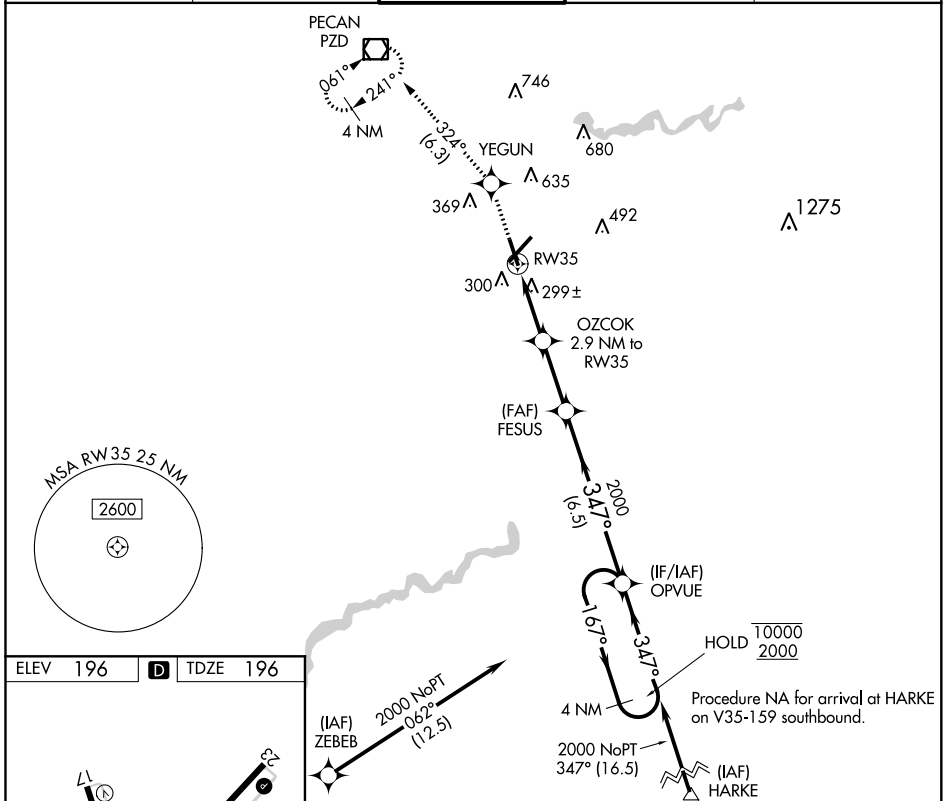
SOUTHWEST GEORGIA RGNL (ABY)

RNP APCH.

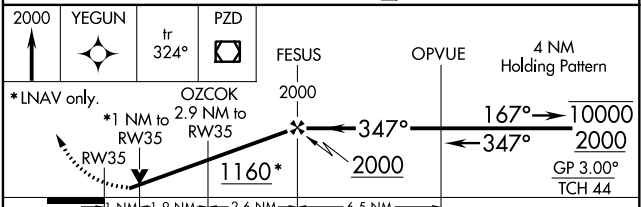
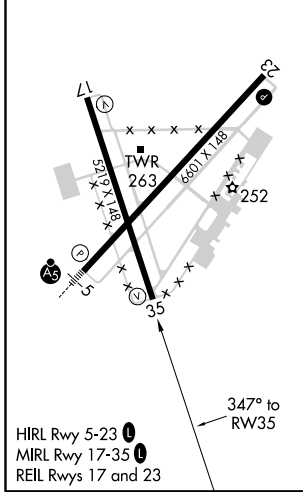
▼ For uncompensated Baro-VNAV systems, LNAV/VNAV NA below -7°C or above 54°C. Rwy 34 helicopter visibility reduction below ¼ SM NA.

MISSED APPROACH: Climb to 2000 direct YEGUN and on track 324° to PZD VOR/DME and hold.

ATIS 133.05	JACKSONVILLE CENTER 125.75 226.8	ALBANY TOWER * 120.25 (CTAF) 0336.4	GND CON 121.9 348.6	UNICOM 122.95
-----------------------	--	---	-------------------------------	-------------------------



ELEV 196	D	TDZE 196
----------	----------	----------



CATEGORY	A	B	C	D
LPV DA		495-1	299 (300-1)	
LNAV/VNAV DA		475-1	279 (300-1)	
LNAV MDA		560-1	364 (400-1)	
C CIRCLING	640-1 444 (500-1)	660-1 464 (500-1)	940-2¼ 744 (800-2¼)	940-2½ 744 (800-2½)

SE-4, 10 SEP 2020 to 08 OCT 2020

SE-4, 10 SEP 2020 to 08 OCT 2020