

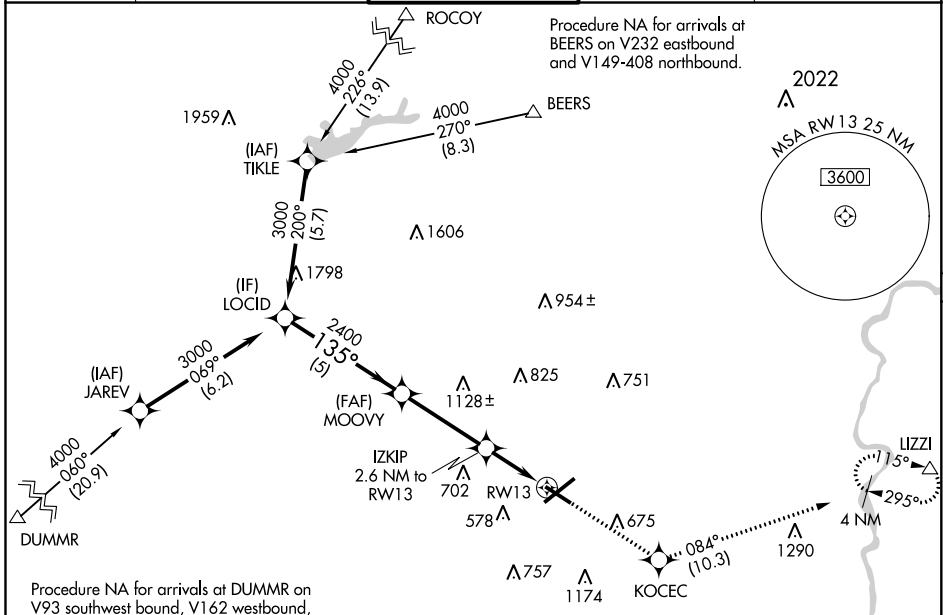
WAAS CH 82532 W13A	APP CRS 135°	Rwy Idg TDZE 386 Apt Elev 394	5800
--	------------------------	---	-------------

RNAV (GPS) RWY 13

LEHIGH VALLEY INTL (ABE)

<p>▼ For uncompensated Baro-VNAV systems, LNAV/VNAV NA below -16°C (4°F) or above 54°C (130°F). DME/DME RNP-0.3 NA. ▲ For inoperative MALS, increase LNAV Cat C/D visibility to 1 ½ mile.</p>	MALS	MISSED APPROACH: Climb to 3000 direct KOCEC and on track 084° to LIZZI and hold.

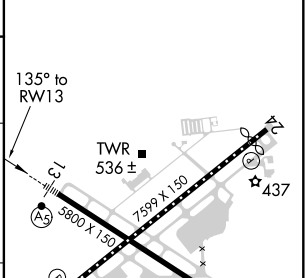
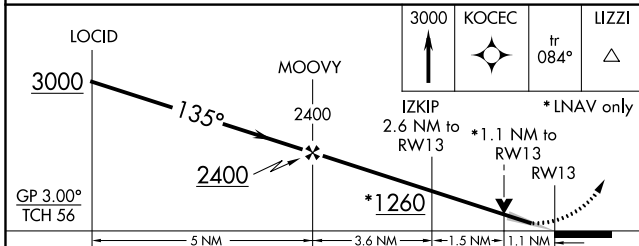
ATIS 126.975	ALLENTOWN APP CON 119.65 124.45 351.8	ALLENTOWN TOWER 120.5 257.95	GND CON 121.9 257.95	CLNC DEL 124.05 257.95
------------------------	---	--	--------------------------------	----------------------------------



NE-4, 10 SEP 2020 to 08 OCT 2020

NE-4, 10 SEP 2020 to 08 OCT 2020

ELEV 394	D TDZE 386
----------	-------------------



CATEGORY	A	B	C	D
LPV DA		586-½	200 (200-½)	
LNAV/VNAV DA		700-½	314 (400-½)	
LNAV MDA	800-½	414 (500-½)	800-¾	414 (500-¾)
C CIRCLING	900-1	506 (600-1)	1180-2¼ 786 (800-2¼)	1600-3 1206 (1300-3)

REIL Rwy 24 and 31
HIRL Rwy 6-24 and 13-31