

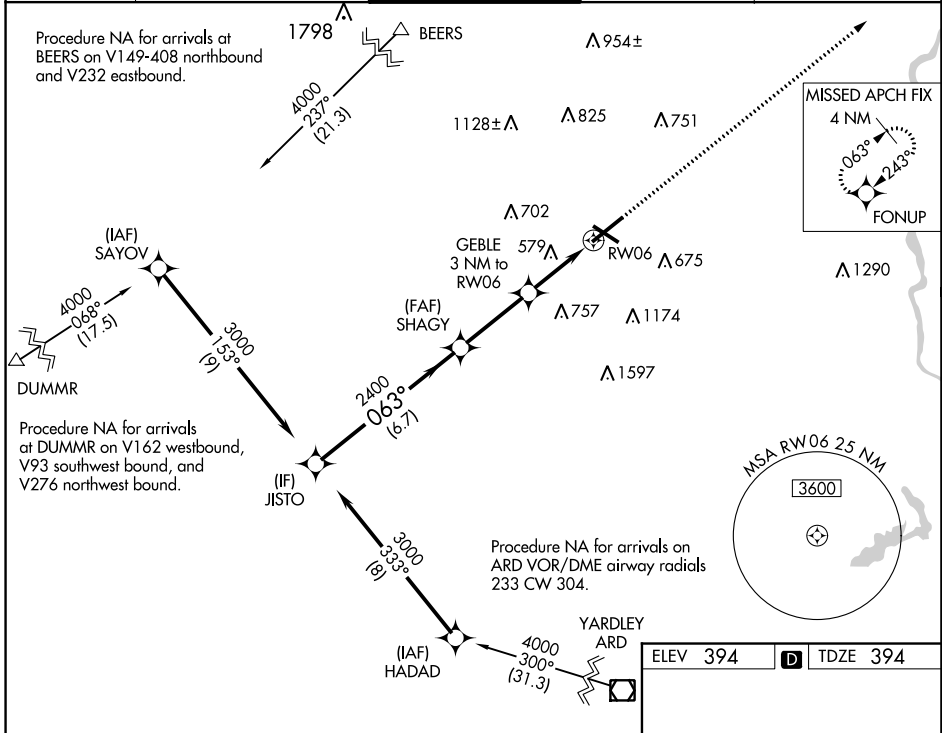
WAAS CH 69432	APP CRS 063°	Rwy Idg TDZE 394	7599
W06A		Apt Elev 394	

RNAV (GPS) RWY 6

LEHIGH VALLEY INTL (ABE)

RNP APCH.	MALSR	MISSED APPROACH: Climb to 3000 direct FONUP and hold.
<p>For uncompensated Baro-VNAV systems, LNAV/VNAV NA below -8°C (18°F) or above 54°C (130°F). For inop ALS, increase LNAV Cat C/D visibility to 1 3/8 SM. **RVR 1800 authorized with use of FD or AP or HUD to DA.</p>		

ATIS 126.975	ALLENTOWN APP CON 119.65 124.45 351.8	ALLENTOWN TOWER 120.5 257.95	GND CON 121.9 257.95	CLNC DEL 124.05 257.95
------------------------	---	--	--------------------------------	----------------------------------



NE-4, 10 SEP 2020 to 08 OCT 2020

NE-4, 10 SEP 2020 to 08 OCT 2020

<p>VGSI and RNAV glidepath not coincident (VGSI Angle 3.00/TCH 48).</p> <p>JISTO 3000 063° SHAGY 2400 GEBLE 3 NM to RW06 *1.3 NM to RW06 RW06</p> <p>GP 3.00° TCH 56</p> <p>6.7 NM 3.1 NM 1.7 NM 1.3</p>		<p>3000 FONUP</p> <p>*LNAV only.</p>		
CATEGORY	A	B	C	D
LPV DA **	594/24		200 (200-1/2)	
LNAV/ DA VNAV	644/24		250 (300-1/2)	
LNAV MDA	840/24 446 (500-1/2)		840/45 446 (500-7/8)	
CIRCLING	900-1 506 (600-1)		1180-2 1/4 1600-3 7/8 (800-2 1/4) 1206 (1300-3)	
		REIL Rwy 24 and 31		HIRL Rwy 6-24 and 13-31