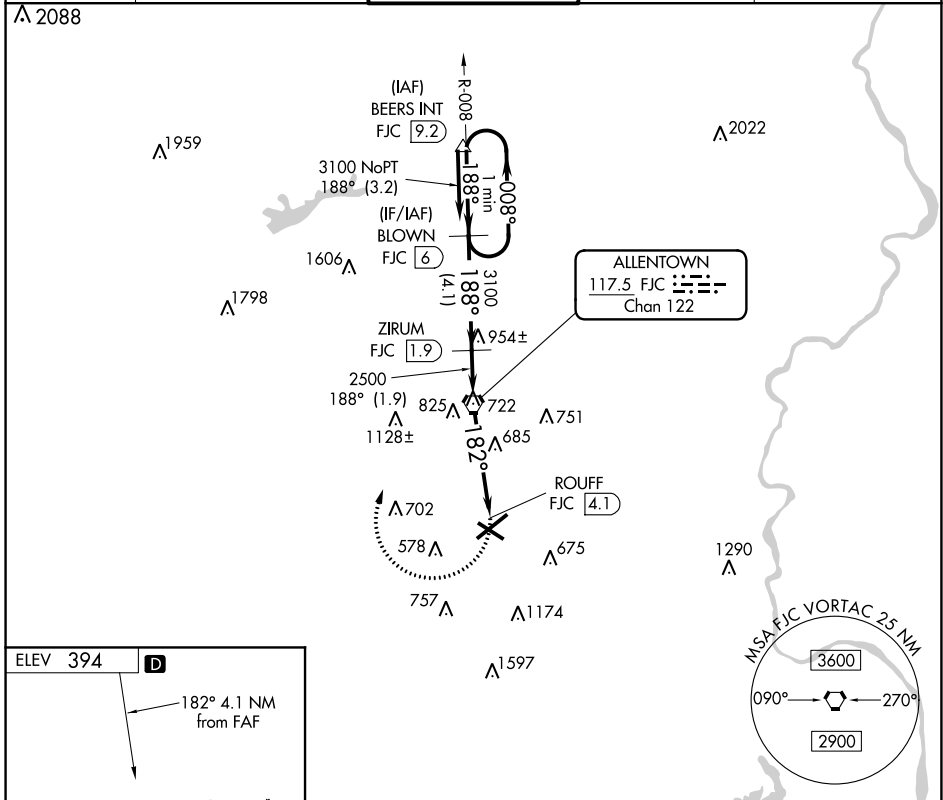


VORTAC FJC <b>117.5</b> Chan <b>122</b>	APP CRS <b>182°</b>	Rwy Idg TDZE Apt Elev	<b>N/A</b> <b>N/A</b> <b>394</b>
---	------------------------	-----------------------------	--

**TACAN-C**  
LEHIGH VALLEY INTL (ABE)

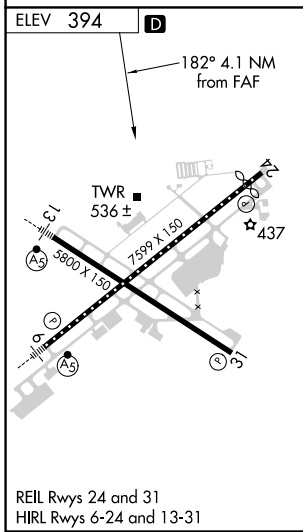
<p>▽ ▲ NA</p>	<p>MISSED APPROACH: Climbing right turn to 3100 direct FJC VORTAC then via FJC R-008 to BLOWN/6 DME and hold.</p>
-------------------	---

<p>ATIS <b>126.975</b></p>	<p>ALLENTOWN APP CON <b>119.65 124.45 351.8</b></p>	<p>ALLENTOWN TOWER <b>120.5 257.95</b></p>	<p>GND CON <b>121.9 257.95</b></p>	<p>CLNC DEL <b>124.05 257.95</b></p>
--------------------------------	---	--	--	--



NE-4, 10 SEP 2020 to 08 OCT 2020

NE-4, 10 SEP 2020 to 08 OCT 2020



3100	FJC	FJC	BLOWN	
	◻	R-008	FJC (6)	
				One Minute Holding Pattern
	ROUFF FJC (4.1)	FJC VORTAC	ZIRUM FJC (1.9)	BLOWN FJC (6)
	182°	188°	188°	008°
	4.1 NM	1.9 NM	4.1 NM	3100
		2500	3100	
CATEGORY	A	B	C	D
◻ CIRCLING	940-1	546 (600-1)	1180-2¼ 786 (800-2¼)	1600-3 1206 (1300-3)