

VORTAC IRQ 113.9 Chan 86	APP CRS 161°	Rwy Idg TDZE Apt Elev	N/A N/A 422
--	------------------------	-----------------------------	--

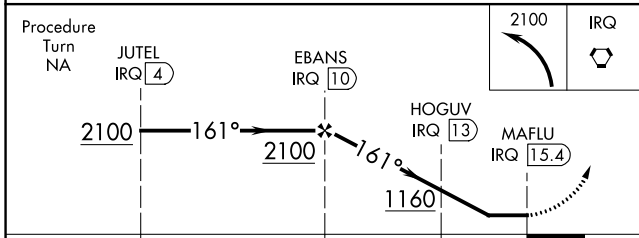
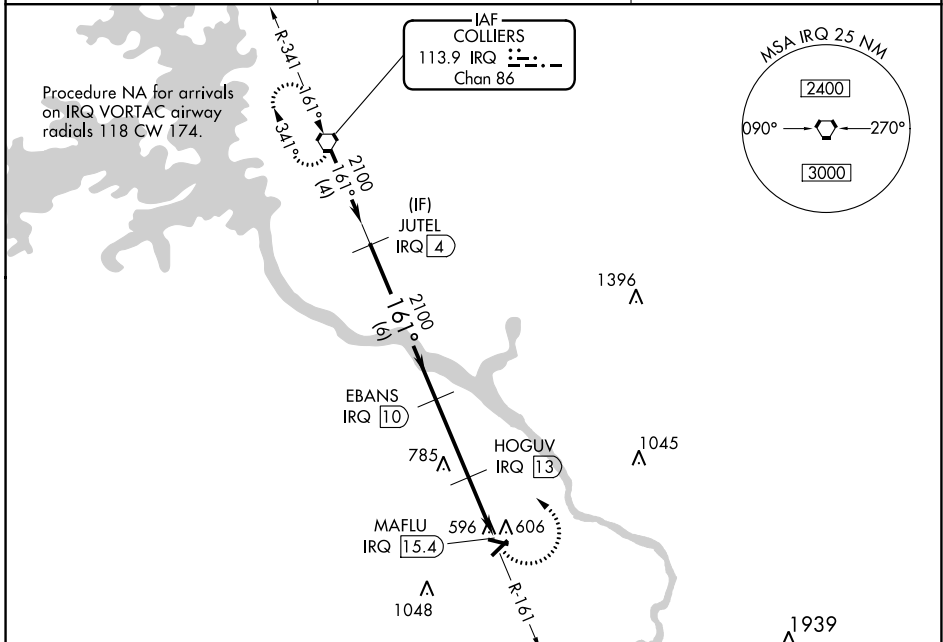
VOR/DME-B

DANIEL FIELD (DNL)

ASR When local altimeter setting not received, use Augusta Rgnl at Bush Field altimeter setting and increase all MDA 60 feet. Procedure NA at night. Helicopter visibility reduction below 1 SM NA.

MISSED APPROACH: Climbing left turn to 2100 direct IRQ VORTAC and hold.

ASOS 135.275	AUGUSTA APP CON ★ 126.8 270.3	UNICOM 123.05 (CTAF) 0
------------------------	---	---



CATEGORY	A	B	C	D
C CIRCLING	920-1 498 (500-1)		1400-3 978 (1000-3)	

ELEV 422

161° to MAFLU

3733 X 100

4002 X 100

1.2% UP

REIL Rwy 11 **0**

MIRL Rwys 5-23 and 11-29 **0**

SE-4, 10 SEP 2020 to 08 OCT 2020

SE-4, 10 SEP 2020 to 08 OCT 2020