

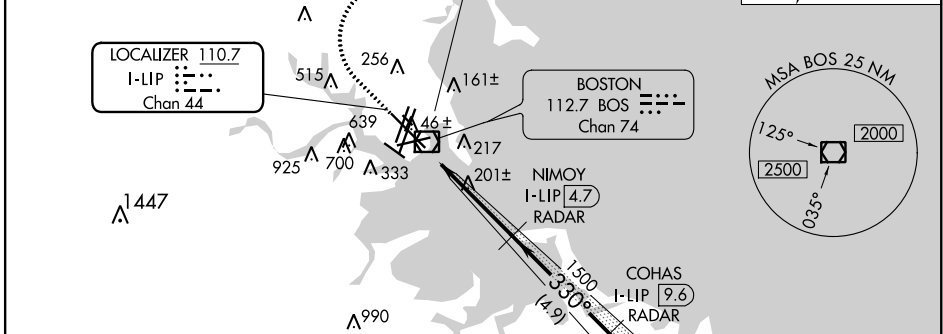
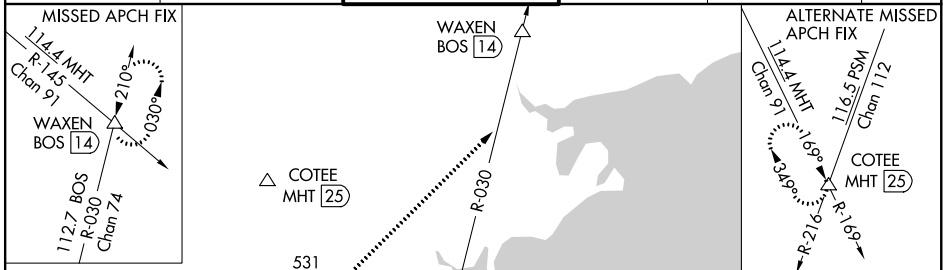
LOC/DME	I-LIP	APP CRS	Rwy Idg	10083
110.7		330°	TDZE	16
Chan 44			Apt Elev	19

ILS RWY 33L (CAT II & III)

GENERAL EDWARD LAWRENCE LOGAN INTL (BOS)

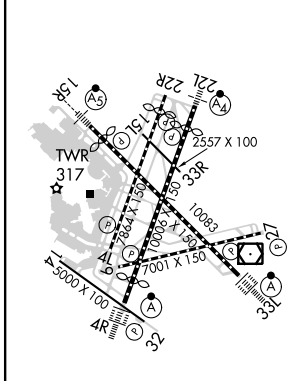
<p>⚠ DME or RADAR required.</p> <p>⚠ CAT II: RVR 1000 authorized with specific OPSPEC, MSPEC, or LOA approval and use of autoland or HUD to touchdown.</p>	<p>ALSIF-2</p>	<p>MISSED APPROACH: Climb to 1500 then climbing right turn to 3000 on BOS VOR/DME R-030 to WAXEN INT/BOS 14 DME and hold.</p>
--	----------------	---

D-ATIS	BOSTON APP CON	BOSTON TOWER	GND CON	CLNC DEL	CPDLC
135.0	120.6 263.1	128.8 257.8 (WEST) 132.225 257.8 (EAST)	121.9 121.75	121.65 257.8	

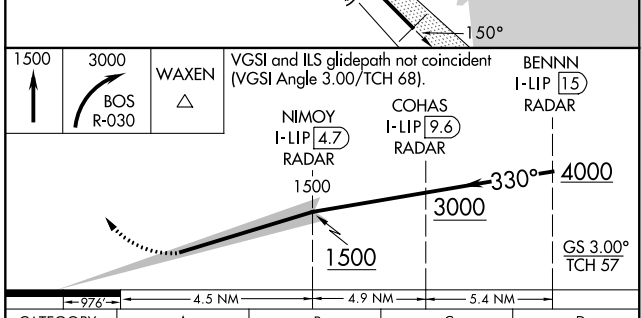


RADAR REQUIRED

ELEV	19	D	TDZE	16
------	-----------	----------	------	-----------



TDZ/CL Rwys 4R, 15R and 33L
 REIL Rwys 4L, 27 and 32
 MIRL Rwy 15L-33R
 HIRL Rwys 4L-22R, 4R-22L, 9-27, 14-32 and 15R-33L



CATEGORY	A	B	C	D
S-ILS 33L	CAT II RA 116/12 100 DA 116			
S-ILS 33L	CAT III RVR 06			

CATEGORY II & III ILS - SPECIAL AIRCREW & AIRCRAFT CERTIFICATION REQUIRED

NE-1, 10 SEP 2020 to 08 OCT 2020

NE-1, 10 SEP 2020 to 08 OCT 2020