

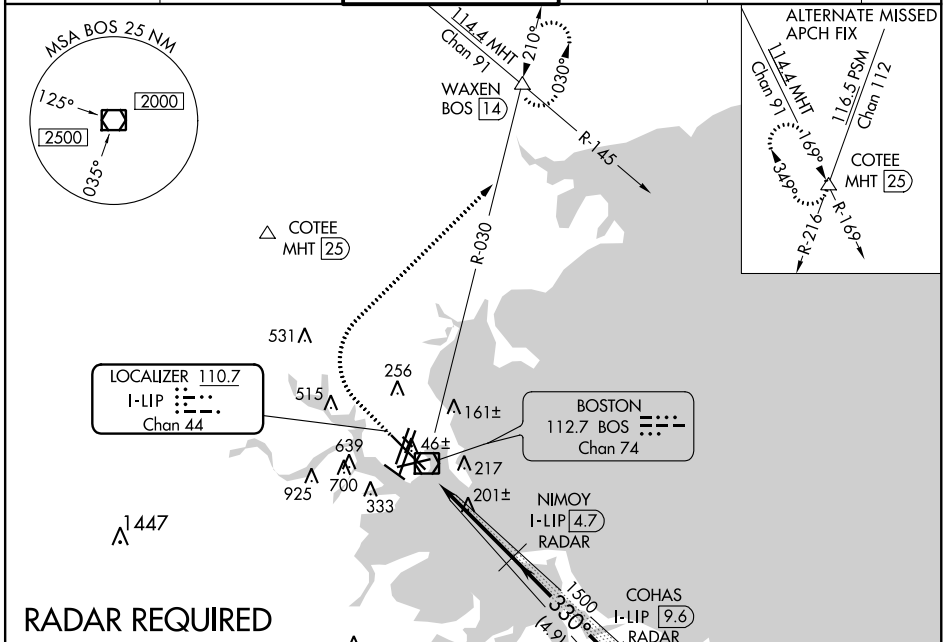
LOC/DME	I-LIP	APP CRS	Rwy Idg	<b>10083</b>
<b>110.7</b>		<b>330°</b>	TDZE	<b>16</b>
Chan <b>44</b>			Apt Elev	<b>19</b>

# ILS RWY 33L (SA CAT I)

## GENERAL EDWARD LAWRENCE LOGAN INTL (BOS)

DME or RADAR required. Requires specific OPSPEC, MSPEC, or LOA approval and use of HUD to DH.	ALSIF-2	MISSED APPROACH: Climb to 1500 then climbing right turn to 3000 on BOS VOR/DME R-030 to WAXEN INT/BOS 14 DME and hold.		

D-ATIS	BOSTON APP CON	BOSTON TOWER	GND CON	CLNC DEL	CPDLC
<b>135.0</b>	<b>120.6 263.1</b>	<b>128.8 257.8 (WEST)</b> <b>132.225 257.8 (EAST)</b>	<b>121.9 121.75</b>	<b>121.65 257.8</b>	

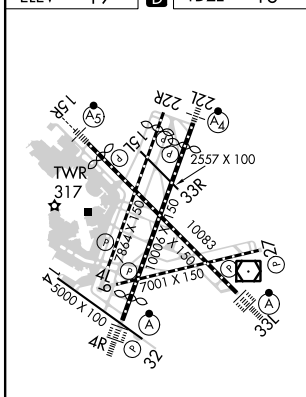


NE-1, 10 SEP 2020 to 08 OCT 2020

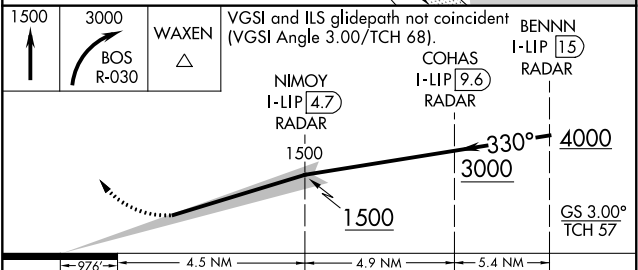
NE-1, 10 SEP 2020 to 08 OCT 2020

### RADAR REQUIRED

ELEV 19	<b>D</b>	TDZE 16
---------	----------	---------



TDZ/CL Rwy 4R, 15R and 33L  
 REIL Rwy 4L, 27 and 32  
 MIRL Rwy 15L-33R  
 HIRL Rwy 4L-22R, 4R-22L,  
 9-27, 14-32 and 15R-33L



CATEGORY	A	B	C	D
S-ILS 33L	RA 166/14 150 DA 166			

**SA CATEGORY I - SPECIAL AIRCREW  
 & AIRCRAFT CERTIFICATION REQUIRED**