

LOC/DME I-MDC <b>110.7</b>	APP CRS <b>149°</b>	Rwy Idg <b>9201</b>
Chan <b>44</b>		TDZE <b>17</b>
		Apt Elev <b>19</b>

# ILS or LOC RWY 15R

GENERAL EDWARD LAWRENCE LOGAN INTL (BOS)

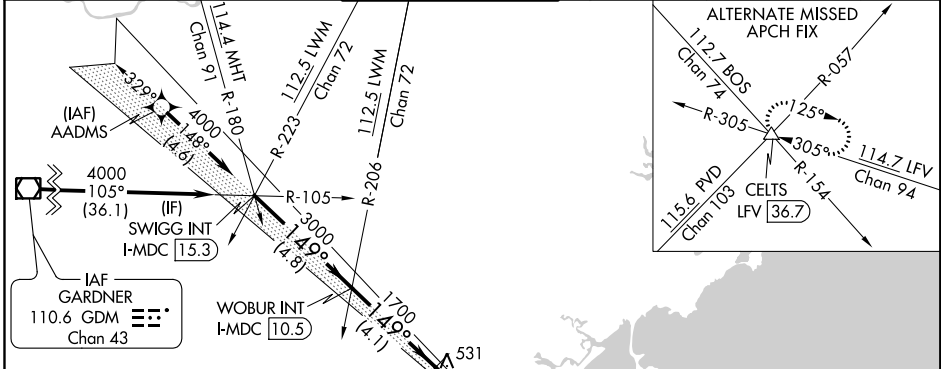
DME required for LOC only. From AADMS: RNAV 1-GPS required.



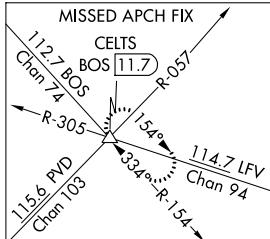
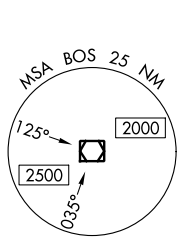
MISSED APPROACH: Climb to 3000 on BOS VOR/DME R-154 to CELTS INT/BOS 11.7 DME and hold.

- ▼** Circling NA for Cats C and D west of Rwy 4L and 15R. Circling NA to Rwy 14. For inop ALS, increase S-LOC 15R Cat C/D visibility to 1½ SM.
- ▲**

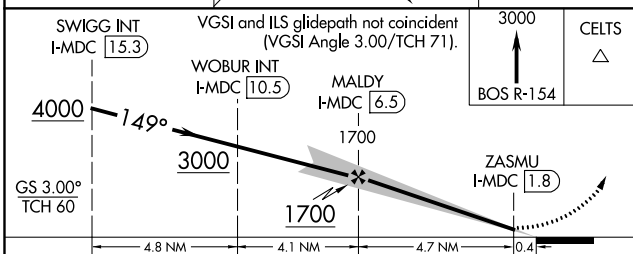
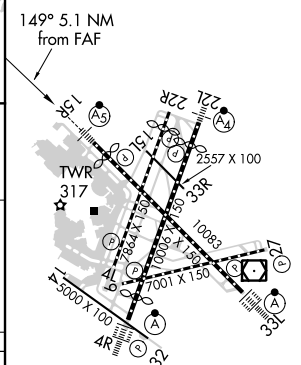
D-ATIS <b>135.0</b>	BOSTON APP CON <b>120.6 263.1</b>	BOSTON TOWER <b>128.8 257.8 (WEST) 132.225 257.8 (EAST)</b>	GND CON <b>121.9 121.75</b>	CLNC DEL <b>121.65 257.8</b>	CPDLC
------------------------	--------------------------------------	--	--------------------------------	---------------------------------	-------



Procedure NA for arrival on GDM VOR/DME airway radials 071 CW 111.



ELEV 19	<b>D</b>	TDZE 17
---------	----------	---------



CATEGORY	A	B	C	D
S-ILS 15R	267/24 250 (300-½)			
S-LOC 15R	580/24 563 (600-½)	580-1¼ 563 (600-1¼)	580-2¼ 563 (600-2¼)	
<b>C</b> CIRCLING	940-1¼ 921 (1000-1¼)	1040-1½ 1021 (1100-1½)	620-1¾ 601 (700-1¾)	620-2 601 (700-2)

TDZ/CL Rwy 4R, 15R and 33L  
REIL Rwy 4L, 27 and 32  
MIRL Rwy 15L-33R  
HIRL Rwy 4L-22R, 4R-22L, 9-27, 14-32 and 15R-33L

NE-1, 10 SEP 2020 to 08 OCT 2020

NE-1, 10 SEP 2020 to 08 OCT 2020